

Free-Standing Restaurant

10646 Chapman Highway, Seymour, TN

For SALE or LEASE



Property Features

- 1,850 sf restaurant space with a drive-thru
- Starbucks lease through February 2018
- 2007 construction in excellent condition
- Growing market with 23,000 ADT
- Contact Broker for Pricing

2017 Demographics

	1Mi	3Mi	5Mi
Estimated Population	3,087	17,374	28,756
Avg HH Income	\$68,719	\$71,424	\$69,370
Med HH Income	\$59,066	\$56,615	\$55,829
Daytime Population	2,305	8,827	15,740

Lloyd Montgomery
lmontgomery@bsmproperties.com

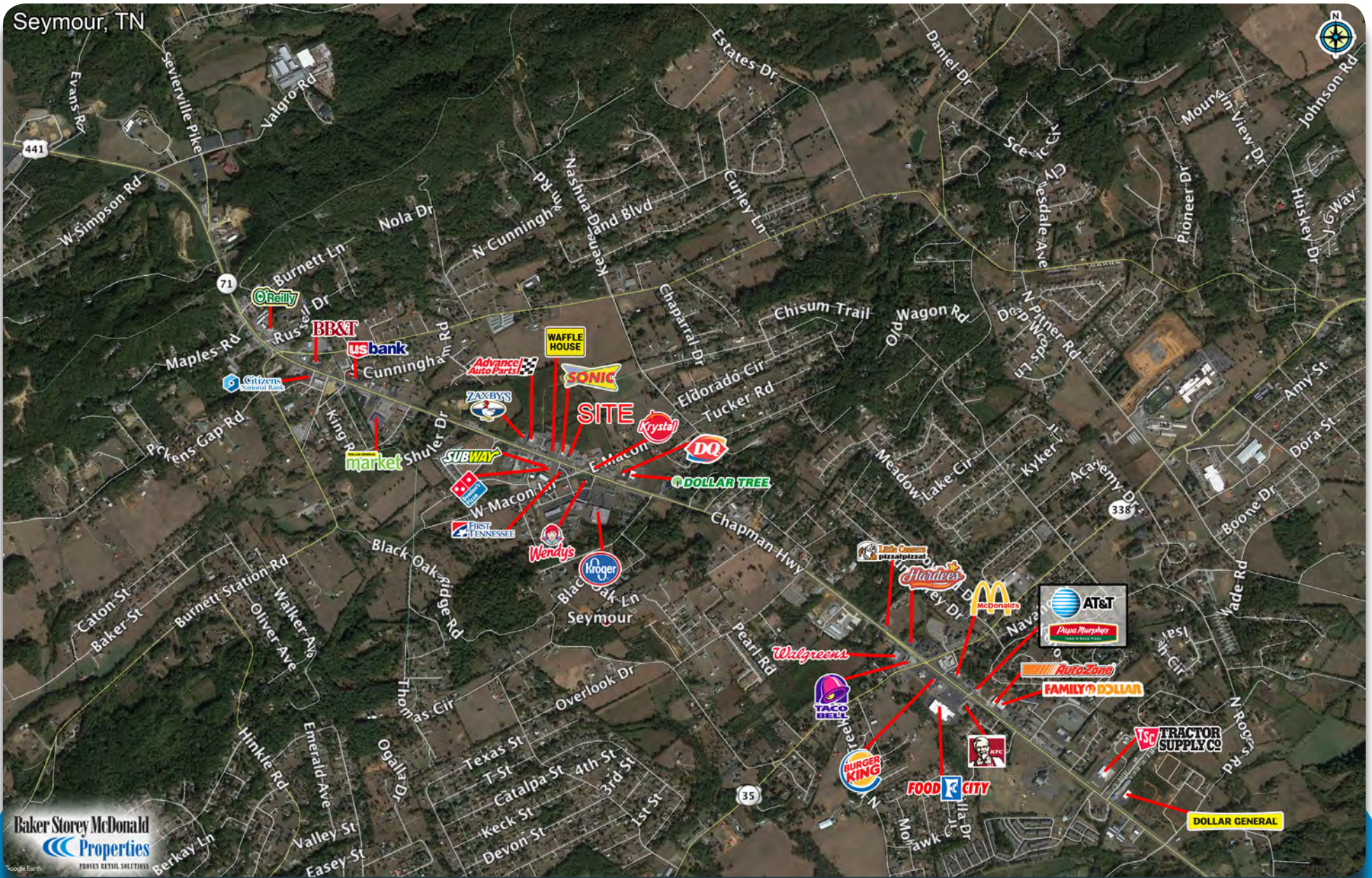
Matt Reed
mreed@bsmproperties.com

813 S Northshore Drive, Suite 201
Knoxville, TN 37919
865-588-8663
www.bsmproperties.com

Baker Storey McDonald Properties
PROVEN RETAIL SOLUTIONS

The information contained herein is believed to be accurate but is not warranted as to the accuracy and may change or be updated without notice. Seller or landlord makes no representation as to the environmental condition of the property and recommends purchaser's or tenants independent investigation.

Seymour, TN



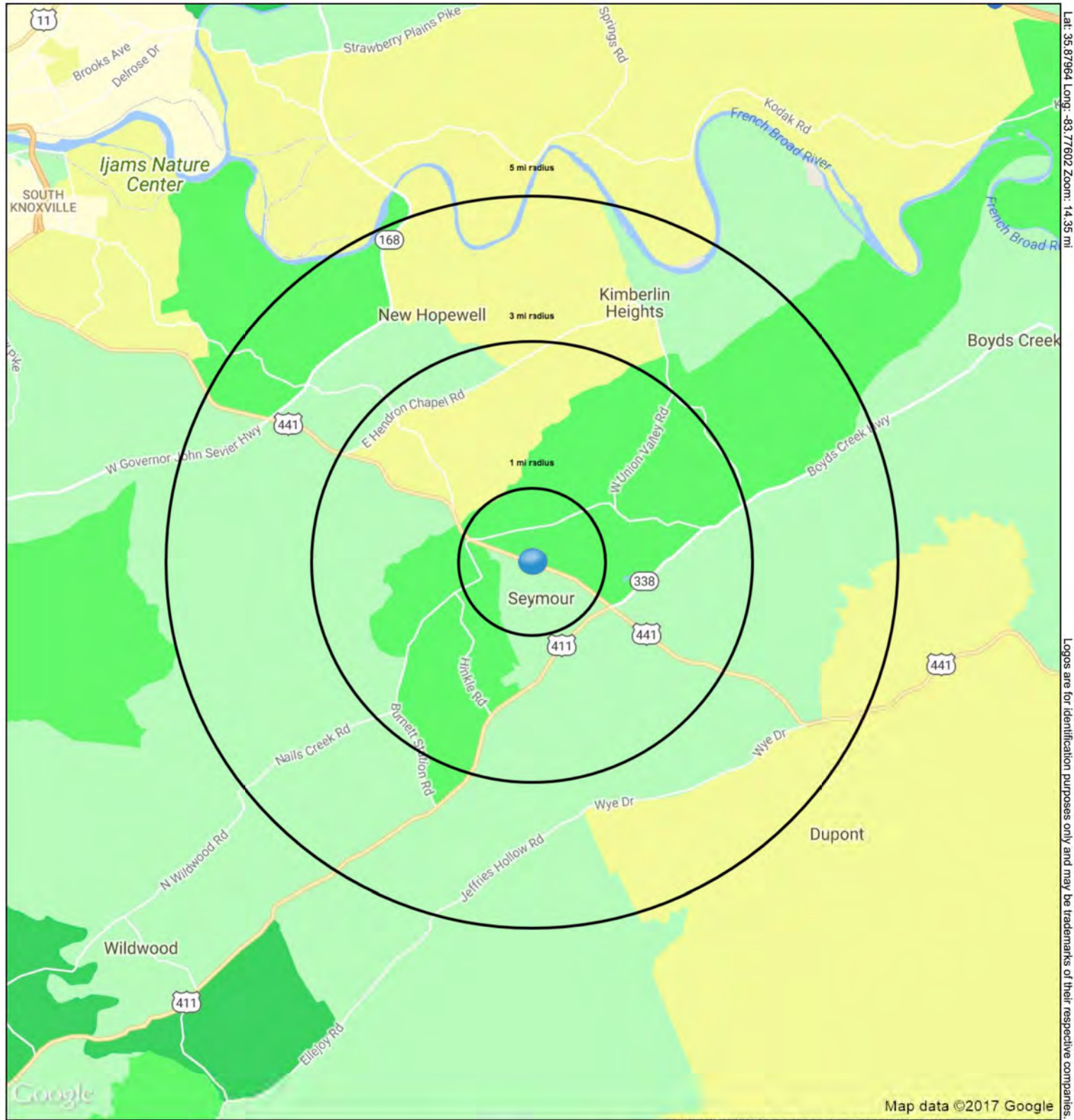
Baker Storey McDonald
Properties
PROVEN RETAIL SOLUTIONS

Free-Standing Restaurant

10646 Chapman Highway, Seymour, TN

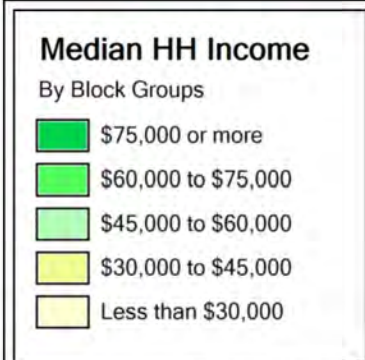
Baker Storey McDonald
Properties
PROVEN RETAIL SOLUTIONS

The information contained herein is believed to be accurate but is not warranted as to the accuracy and may change or be updated without notice. Seller or landlord makes no representation as to the environmental condition of the property and recommends purchaser's or tenants independent investigation.



Lat: 35.87964 Long: -83.77602 Zoom: 14.35 mi

Logos are for identification purposes only and may be trademarks of their respective companies.



10646 Chapman Hwy

Seymour, TN 37865-4703

Current Year Estimated
Median Household Income
July 2017



This map was produced using data from private and government sources deemed to be reliable. The information herein is provided without representation or warranty.

SUMMARY PROFILE

2000-2010 Census, 2017 Estimates with 2022 Projections
 Calculated using Weighted Block Centroid from Block Groups



Lat/Lon: 35.8797/-83.7760

RS1

10646 Chapman Hwy Seymour, TN 37865-4703		1 mi radius	3 mi radius	5 mi radius
POPULATION	2017 Estimated Population	3,087	17,374	28,756
	2022 Projected Population	3,159	17,818	29,560
	2010 Census Population	3,008	16,986	28,056
	2000 Census Population	2,318	13,880	22,979
	Projected Annual Growth 2017 to 2022	0.5%	0.5%	0.6%
	Historical Annual Growth 2000 to 2017	2.0%	1.5%	1.5%
	2017 Median Age	44.5	41.9	41.4
HOUSEHOLDS	2017 Estimated Households	1,230	6,839	11,254
	2022 Projected Households	1,246	7,007	11,630
	2010 Census Households	1,188	6,584	10,802
	2000 Census Households	909	5,364	8,840
	Projected Annual Growth 2017 to 2022	0.3%	0.5%	0.7%
	Historical Annual Growth 2000 to 2017	2.1%	1.6%	1.6%
RACE AND ETHNICITY	2017 Estimated White	97.1%	96.6%	96.4%
	2017 Estimated Black or African American	1.0%	0.9%	1.1%
	2017 Estimated Asian or Pacific Islander	0.6%	0.8%	0.8%
	2017 Estimated American Indian or Native Alaskan	0.2%	0.1%	0.2%
	2017 Estimated Other Races	1.1%	1.5%	1.6%
	2017 Estimated Hispanic	1.5%	1.6%	1.7%
INCOME	2017 Estimated Average Household Income	\$68,719	\$71,424	\$69,370
	2017 Estimated Median Household Income	\$59,066	\$56,615	\$55,829
	2017 Estimated Per Capita Income	\$27,389	\$28,115	\$27,232
EDUCATION (AGE 25+)	2017 Estimated Elementary (Grade Level 0 to 8)	5.3%	4.7%	4.2%
	2017 Estimated Some High School (Grade Level 9 to 11)	9.9%	8.4%	8.5%
	2017 Estimated High School Graduate	43.1%	38.2%	37.4%
	2017 Estimated Some College	17.6%	21.5%	22.1%
	2017 Estimated Associates Degree Only	4.8%	7.6%	8.5%
	2017 Estimated Bachelors Degree Only	13.0%	11.6%	11.7%
	2017 Estimated Graduate Degree	6.3%	7.9%	7.7%
BUSINESS	2017 Estimated Total Businesses	206	552	897
	2017 Estimated Total Employees	1,310	3,463	6,636
	2017 Estimated Employee Population per Business	6.4	6.3	7.4
	2017 Estimated Residential Population per Business	15.0	31.5	32.1

This report was produced using data from private and government sources deemed to be reliable. The information herein is provided without representation or warranty.