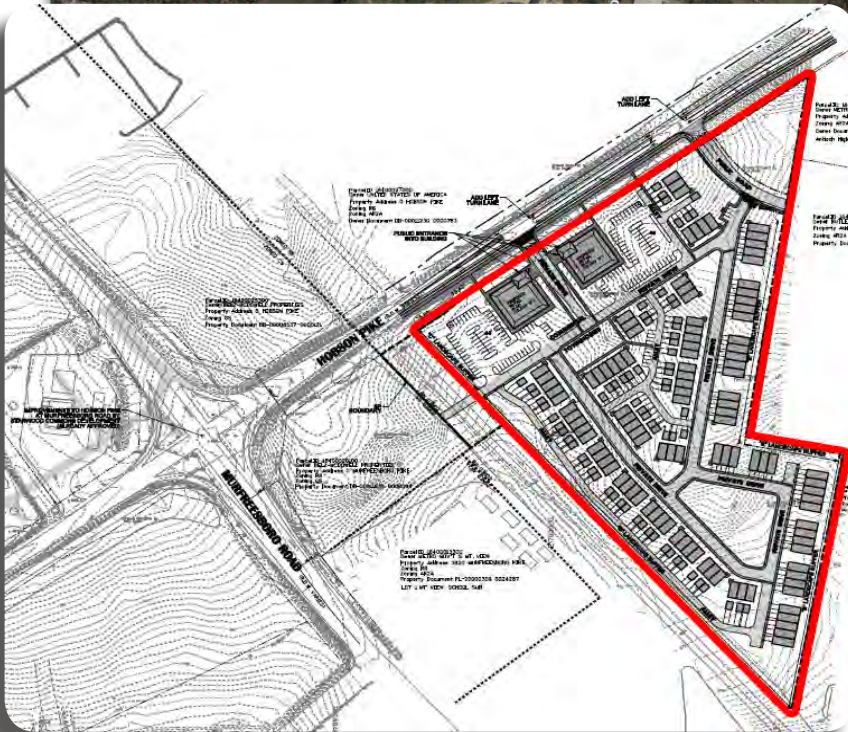
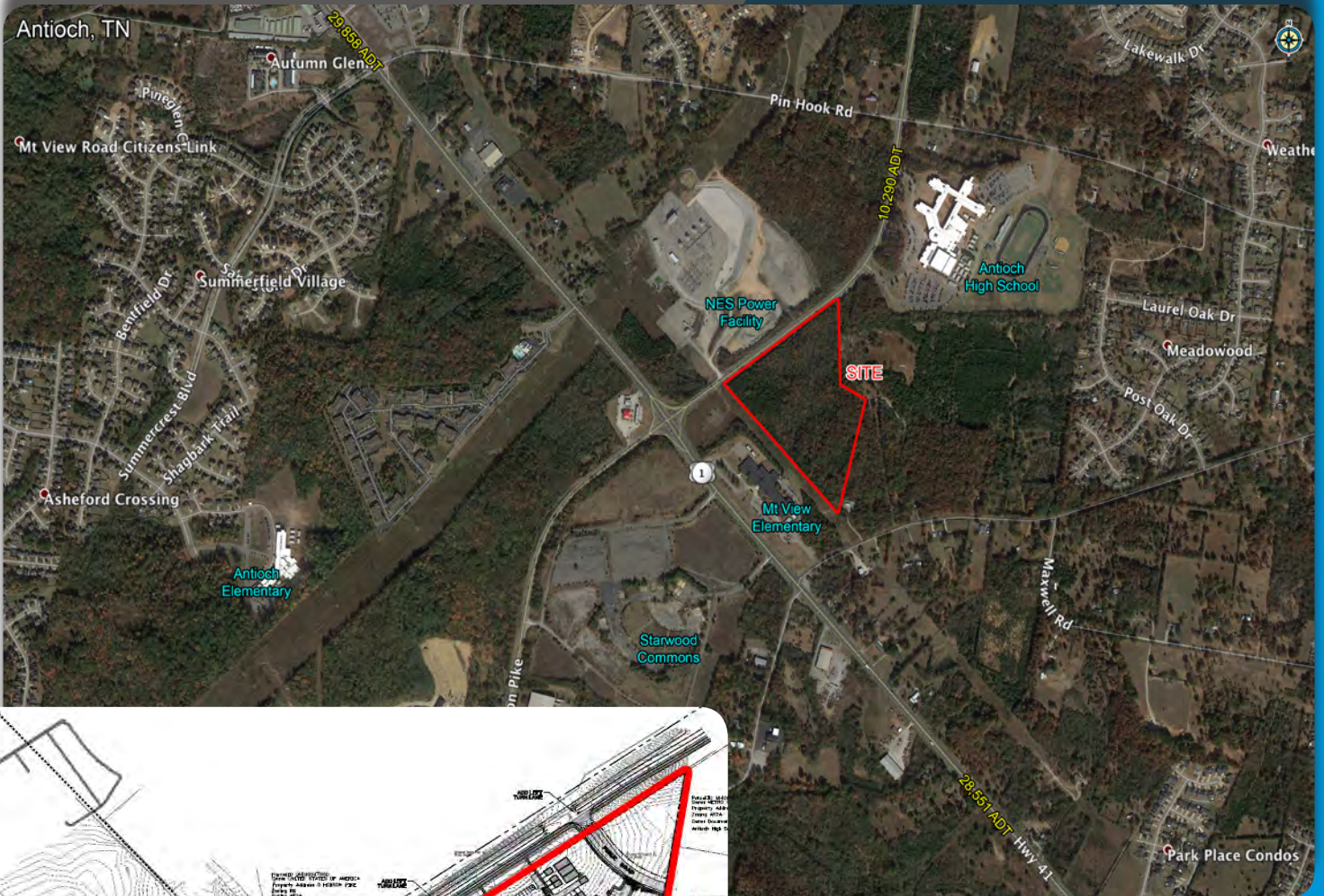


15.77 AC TOWN HOME SITE

Located along Hobson Pike, Antioch, TN

Call For Pricing

For SALE



Property Features

- As shown 112 units
- 12.58 Acre Town Home Site
- 2.86 Acre Commercial Site
- SP Zoning

Michael Galpin

mgalpin@bsmproperties.com

3011 Armory Drive, Suite 120
Nashville, TN 37204

615-373-9511

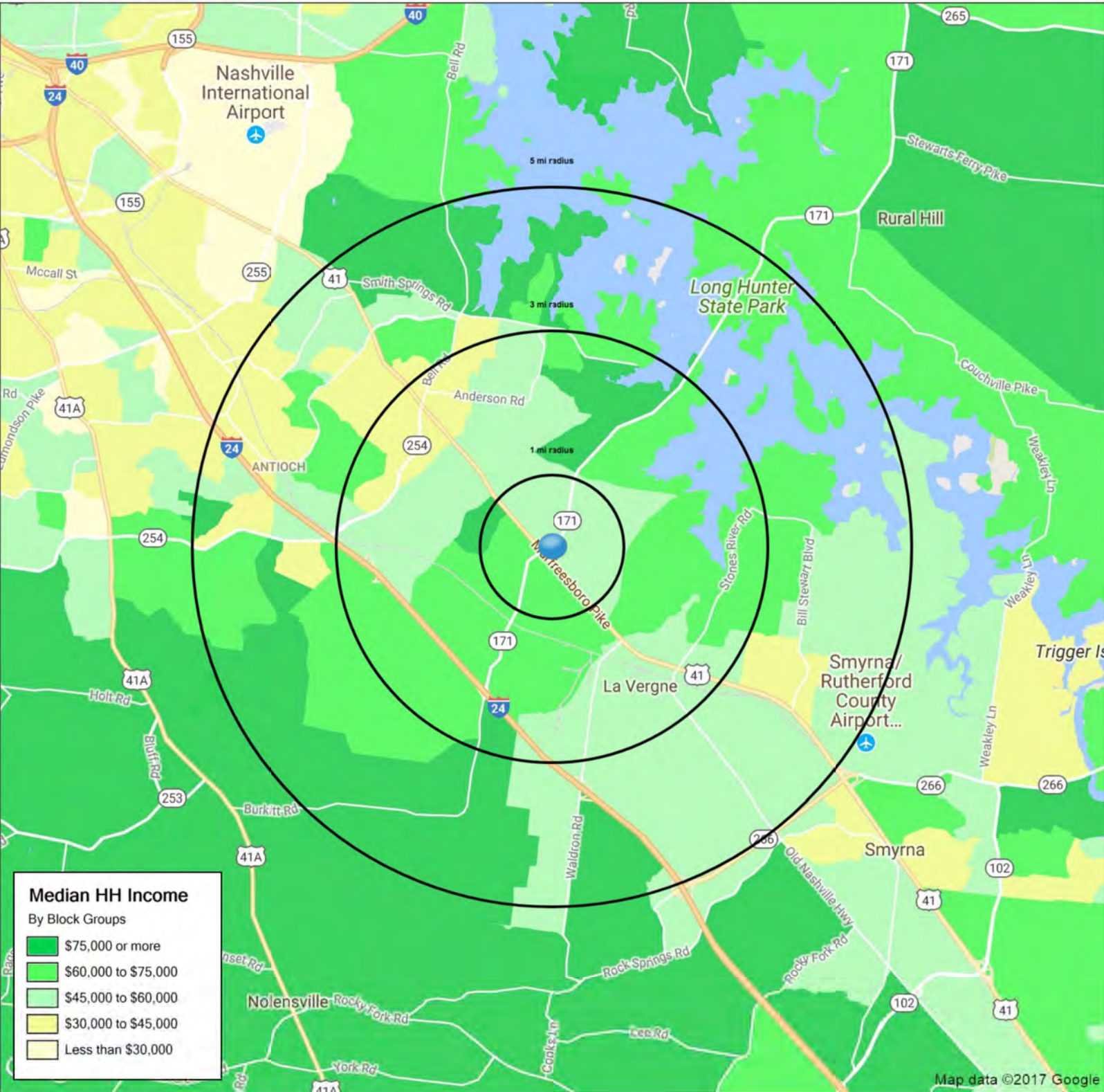
www.bsmproperties.com

Baker Storey McDonald Properties
PROVEN RETAIL SOLUTIONS

The information contained herein is believed to be accurate but is not warranted as to the accuracy and may change or be updated without notice. Seller or landlord makes no representation as to the environmental condition of the property and recommends purchaser's or tenants independent investigation.

1732-1864 TN-171

Nashville, TN 37013



	1 mi radius	3 mi radius	5 mi radius
Population	3,808	51,197	128,318
Average HH Income	\$66,774	\$61,876	\$63,101
Median HH Income	\$56,911	\$55,806	\$55,732
Est. Adj. Daytime Demographics (16+)	2,145	27,212	58,126

SUMMARY PROFILE

2000-2010 Census, 2017 Estimates with 2022 Projections
 Calculated using Weighted Block Centroid from Block Groups



Lat/Lon: 36.0434/-86.6037

RS1

1732-1864 TN-171		1 mi radius	3 mi radius	5 mi radius
Nashville, TN 37013				
POPULATION	2017 Estimated Population	3,808	51,197	128,318
	2022 Projected Population	4,008	55,262	140,415
	2010 Census Population	2,382	45,278	115,263
	2000 Census Population	590	28,431	80,050
	Projected Annual Growth 2017 to 2022	1.0%	1.6%	1.9%
	Historical Annual Growth 2000 to 2017	32.1%	4.7%	3.5%
	2017 Median Age	32.4	32.2	32.2
HOUSEHOLDS	2017 Estimated Households	1,377	19,943	49,300
	2022 Projected Households	1,465	21,515	53,484
	2010 Census Households	833	17,420	43,758
	2000 Census Households	249	11,571	32,180
	Projected Annual Growth 2017 to 2022	1.3%	1.6%	1.7%
	Historical Annual Growth 2000 to 2017	26.7%	4.3%	3.1%
RACE AND ETHNICITY	2017 Estimated White	50.3%	46.0%	51.3%
	2017 Estimated Black or African American	36.7%	40.7%	33.4%
	2017 Estimated Asian or Pacific Islander	3.5%	3.9%	4.0%
	2017 Estimated American Indian or Native Alaskan	0.3%	0.3%	0.3%
	2017 Estimated Other Races	9.2%	9.2%	10.9%
	2017 Estimated Hispanic	13.0%	12.6%	14.6%
INCOME	2017 Estimated Average Household Income	\$66,774	\$61,876	\$63,101
	2017 Estimated Median Household Income	\$56,911	\$55,806	\$55,732
	2017 Estimated Per Capita Income	\$24,149	\$24,123	\$24,254
EDUCATION (AGE 25+)	2017 Estimated Elementary (Grade Level 0 to 8)	3.3%	4.4%	4.8%
	2017 Estimated Some High School (Grade Level 9 to 11)	6.1%	6.0%	6.3%
	2017 Estimated High School Graduate	20.8%	26.6%	29.4%
	2017 Estimated Some College	24.8%	23.3%	21.6%
	2017 Estimated Associates Degree Only	6.4%	8.1%	7.7%
	2017 Estimated Bachelors Degree Only	26.9%	21.7%	21.3%
	2017 Estimated Graduate Degree	11.6%	9.9%	8.9%
BUSINESS	2017 Estimated Total Businesses	103	1,278	2,804
	2017 Estimated Total Employees	1,505	17,808	33,954
	2017 Estimated Employee Population per Business	14.5	13.9	12.1
	2017 Estimated Residential Population per Business	36.8	40.1	45.8

This report was produced using data from private and government sources deemed to be reliable. The information herein is provided without representation or warranty.