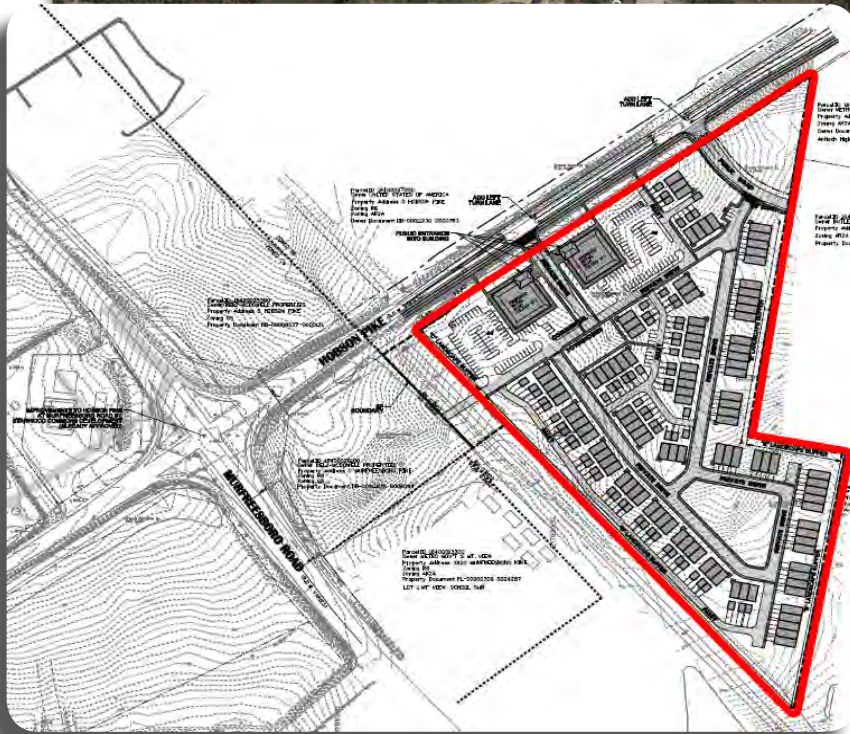
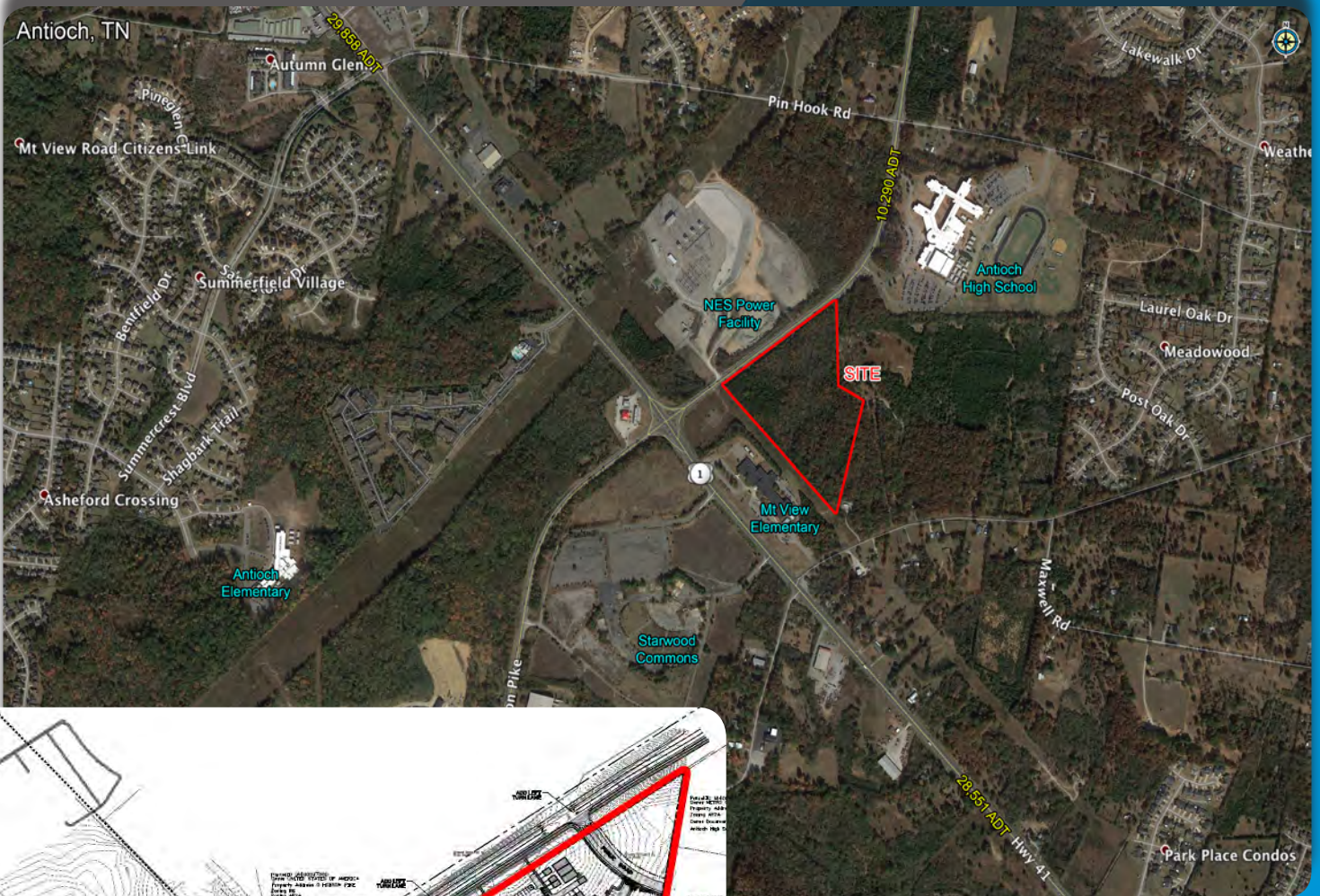


15.77 AC TOWN HOME SITE

Located along Hobson Pike, Antioch, TN

Call For Pricing

For SALE



Property Features

- As shown 112 units
- 12.58 Acre Town Home Site
- 2.86 Acre Commercial Site
- SP Zoning

Michael Galpin

mgalpin@bsmproperties.com

3011 Armory Drive, Suite 120
Nashville, TN 37204

615-373-9511

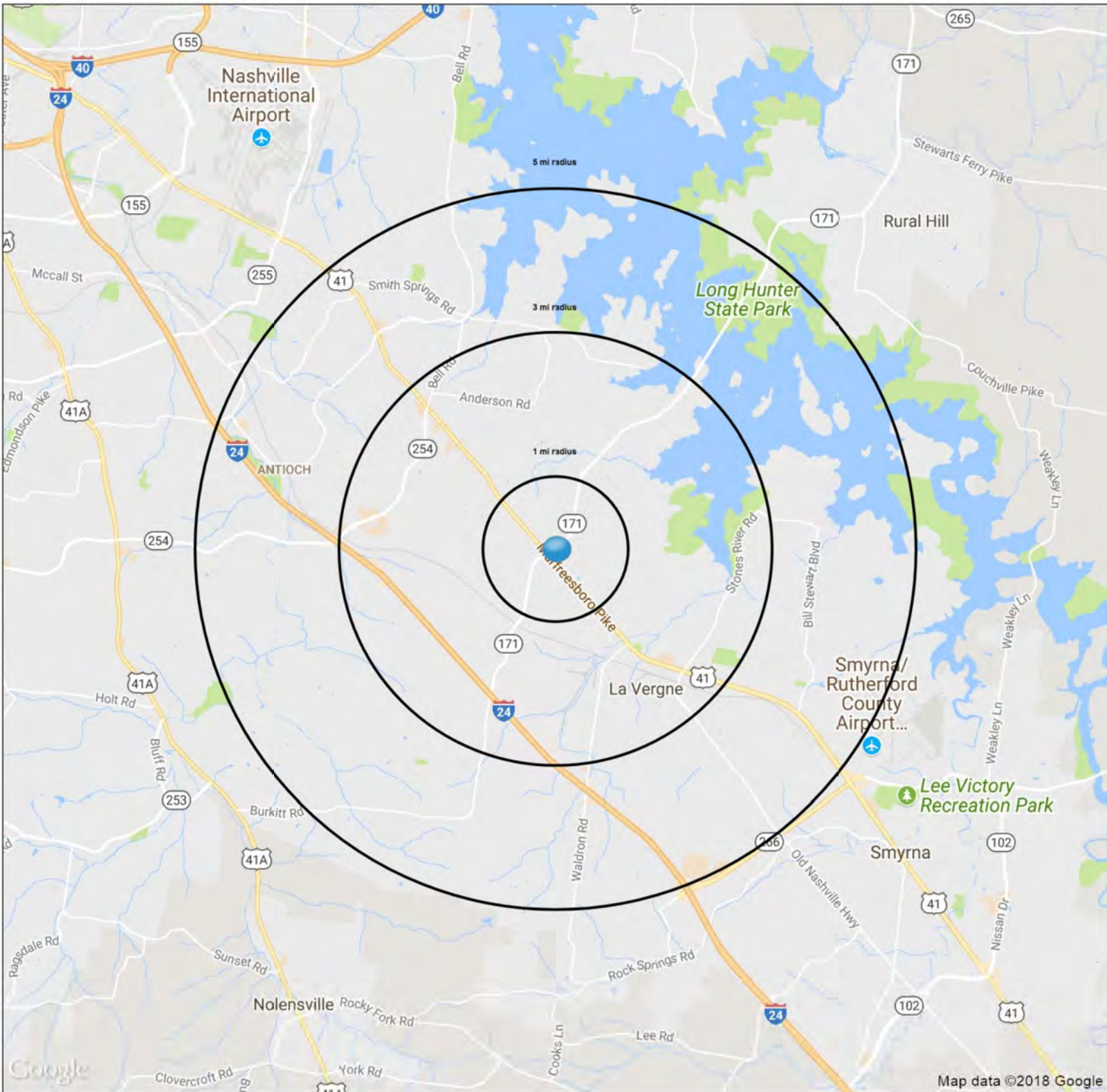
www.bsmproperties.com

Baker Storey McDonald Properties
PROVEN RETAIL SOLUTIONS

The information contained herein is believed to be accurate but is not warranted as to the accuracy and may change or be updated without notice. Seller or landlord makes no representation as to the environmental condition of the property and recommends purchaser's or tenants independent investigation.

1732-1864 TN-171

Nashville, TN 37013



Demographics

	1 mi radius	3 mi radius	5 mi radius
Population	5,736	52,955	131,864
Households	2,201	20,686	50,583
Population Median Age	31.8	32.0	31.9
5 Yr Pop Growth (Total%)	2.7%	5.3%	7.2%

SUMMARY PROFILE

2000-2010 Census, 2017 Estimates with 2022 Projections
 Calculated using Weighted Block Centroid from Block Groups



Lat/Lon: 36.0436/-86.6045

RS1

1732-1864 TN-171		1 mi radius	3 mi radius	5 mi radius
Nashville, TN 37013				
POPULATION	2017 Estimated Population	5,736	52,955	131,864
	2022 Projected Population	5,888	55,777	141,410
	2010 Census Population	3,684	46,358	117,220
	2000 Census Population	864	29,238	81,800
	Projected Annual Growth 2017 to 2022	0.5%	1.1%	1.4%
	Historical Annual Growth 2000 to 2017	33.2%	4.8%	3.6%
	2017 Median Age	31.8	32	31.9
HOUSEHOLDS	2017 Estimated Households	2,201	20,686	50,583
	2022 Projected Households	2,344	22,329	54,963
	2010 Census Households	1,387	17,852	44,374
	2000 Census Households	390	11,978	32,887
	Projected Annual Growth 2017 to 2022	1.3%	1.6%	1.7%
	Historical Annual Growth 2000 to 2017	27.3%	4.3%	3.2%
RACE AND ETHNICITY	2017 Estimated White	51.5%	45.9%	50.8%
	2017 Estimated Black or African American	37.2%	40.4%	33.4%
	2017 Estimated Asian or Pacific Islander	3.5%	4.0%	4.2%
	2017 Estimated American Indian or Native Alaskan	0.3%	0.3%	0.3%
	2017 Estimated Other Races	7.6%	9.3%	11.3%
	2017 Estimated Hispanic	10.3%	12.7%	15.2%
INCOME	2017 Estimated Average Household Income	\$57,285	\$67,003	\$66,685
	2017 Estimated Median Household Income	\$59,512	\$56,406	\$56,253
	2017 Estimated Per Capita Income	\$21,980	\$26,187	\$25,588
EDUCATION (AGE 25+)	2017 Estimated Elementary (Grade Level 0 to 8)	2.1%	3.9%	4.5%
	2017 Estimated Some High School (Grade Level 9 to 11)	5.7%	5.7%	6.2%
	2017 Estimated High School Graduate	19.3%	25.7%	28.8%
	2017 Estimated Some College	26.1%	23.9%	22.1%
	2017 Estimated Associates Degree Only	7.0%	8.8%	8.3%
	2017 Estimated Bachelors Degree Only	28.8%	22.5%	21.8%
	2017 Estimated Graduate Degree	10.9%	9.4%	8.5%
BUSINESS	2017 Estimated Total Businesses	105	1,316	2,665
	2017 Estimated Total Employees	1,537	18,146	32,370
	2017 Estimated Employee Population per Business	14.7	13.8	12.1
	2017 Estimated Residential Population per Business	54.7	40.2	49.5

This report was produced using data from private and government sources deemed to be reliable. The information herein is provided without representation or warranty.