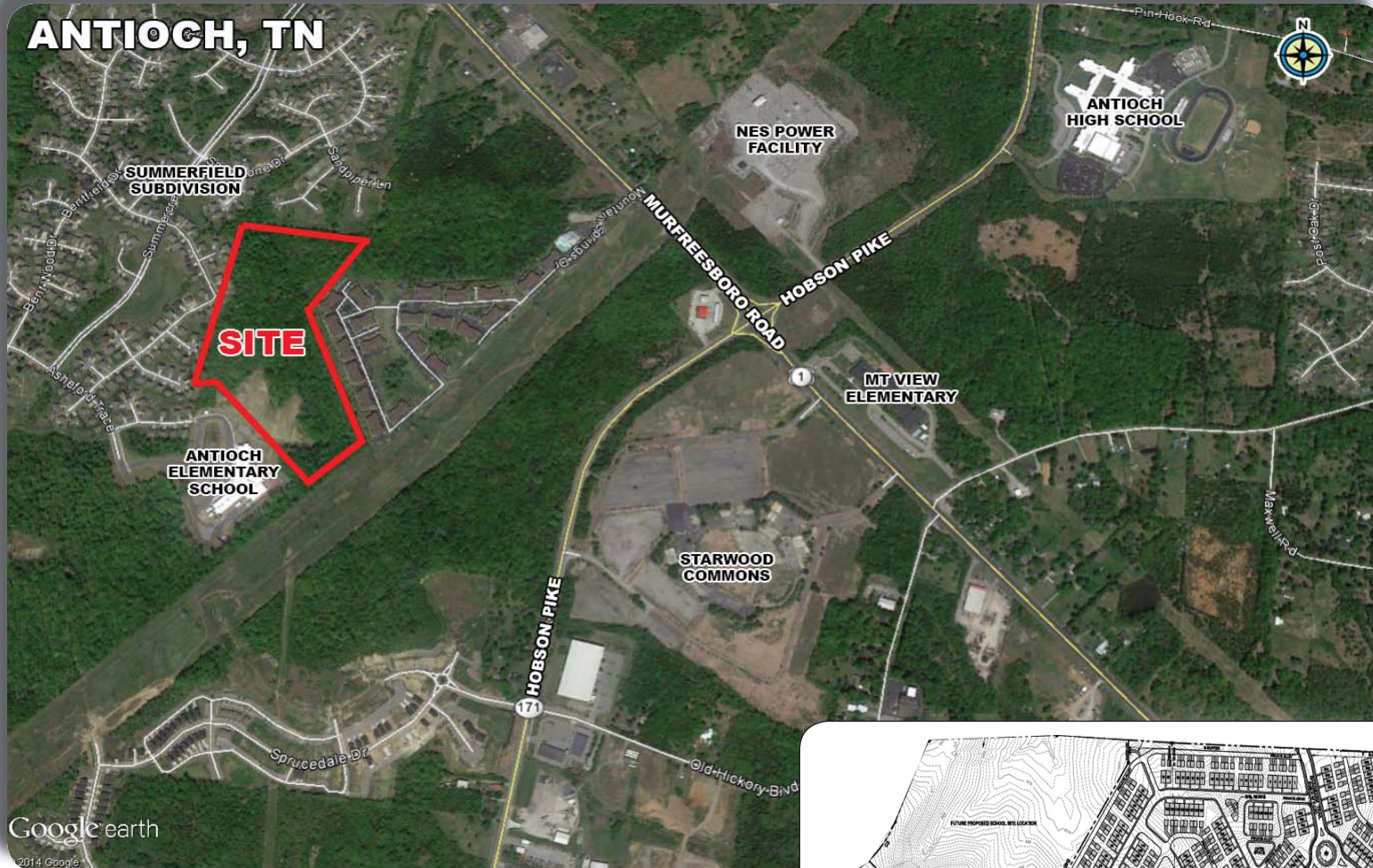


39.68 ACRES TOWN HOME SITE

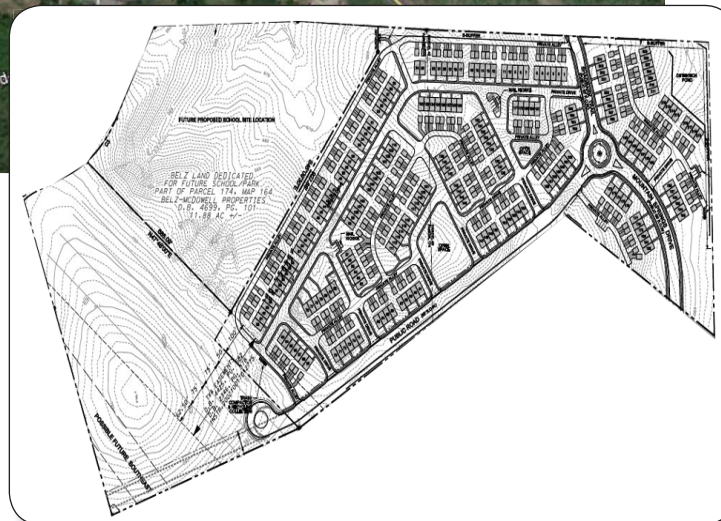
OFF MURFREESBORO PIKE AND MOUNTAIN SPRING DR, ANTIOCH, TN

FOR SALE

39.68 ACRES AVAILABLE



Demographics	1mi	3Mi	5Mi
Population	3,124	50,729	124,947
Avg HH Inc	\$71,716	\$62,079	\$61,569
Med HH Inc	\$62,490	\$56,018	\$55,203



PROPERTY FEATURES

- As shown 219 single family attached units

Zoned SP
Call For Pricing

Michael Galpin
mgalpin@bsmproperties.com

3011 Armory Drive, Suite 120
Nashville, TN 37204
615-373-9511
www.bsmproperties.com