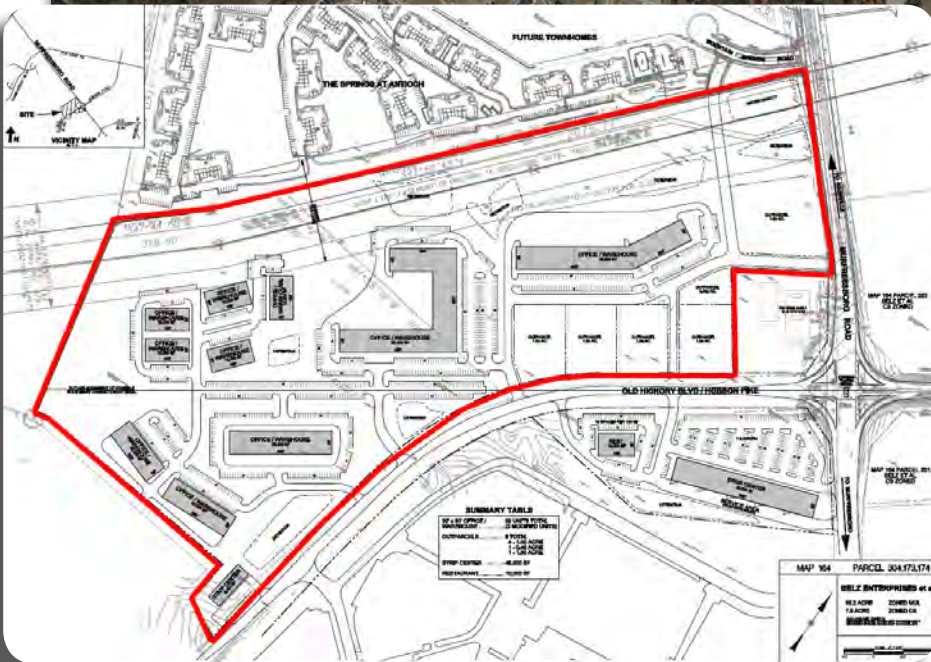
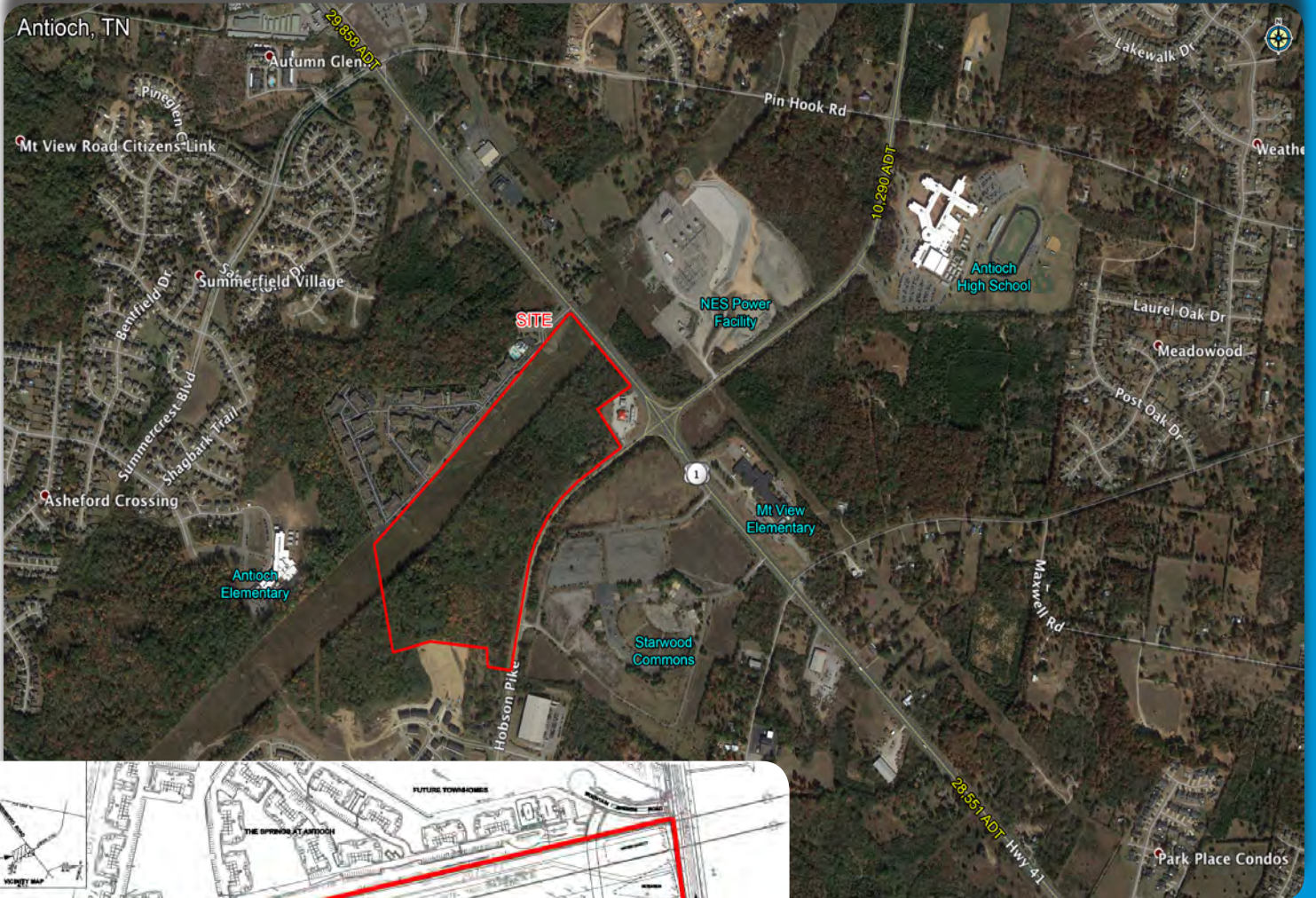


# 55.2 AC OFFICE WAREHOUSE

Located along Murfreesboro Rd & Hobson Pk, Antioch, TN

Call For Pricing

For SALE



## Property Features

- Zoned MUL
- Utilities along Murfreesboro Road

Michael Galpin

[mgalpin@bsmproperties.com](mailto:mgalpin@bsmproperties.com)

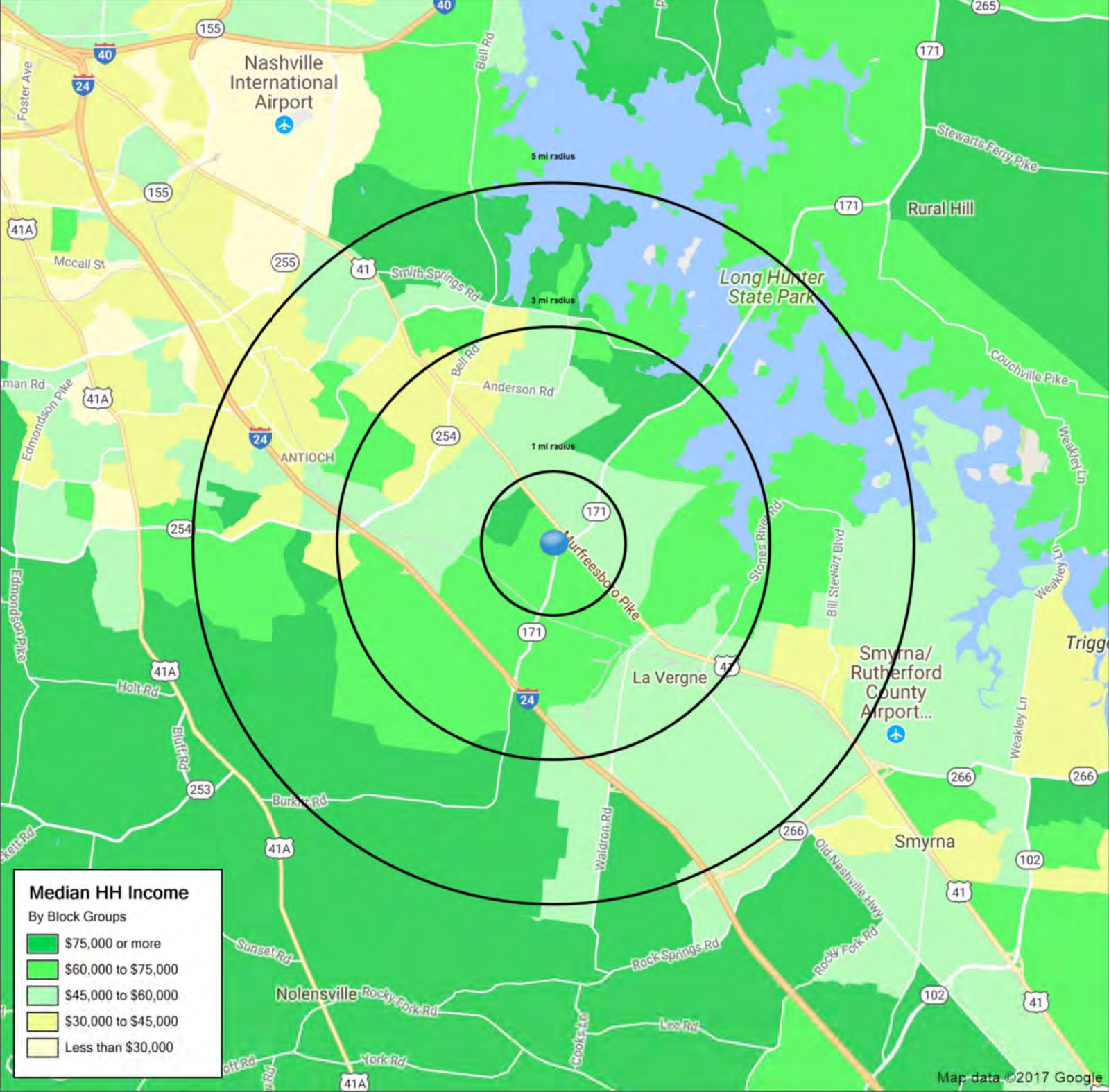
3011 Armory Drive, Suite 120  
Nashville, TN 37204

615-373-9511

[www.bsmproperties.com](http://www.bsmproperties.com)

# 5000 Mountain Springs Dr

Nashville, TN 37013



	1 mi radius	3 mi radius	5 mi radius
<b>Population</b>	5,422	53,239	136,038
<b>Average HH Income</b>	\$67,278	\$61,219	\$62,819
<b>Median HH Income</b>	\$63,131	\$55,059	\$55,487
<b>Est. Adj. Daytime Demographics (16+)</b>	2,390	27,929	58,302

# SUMMARY PROFILE

2000-2010 Census, 2017 Estimates with 2022 Projections  
 Calculated using Weighted Block Centroid from Block Groups



Lat/Lon: 36.0424/-86.6105

RS1

5000 Mountain Springs Dr Nashville, TN 37013		1 mi radius	3 mi radius	5 mi radius
<b>POPULATION</b>	2017 Estimated Population	5,422	53,239	136,038
	2022 Projected Population	5,763	57,097	148,651
	2010 Census Population	3,536	46,776	121,770
	2000 Census Population	760	30,159	85,569
	Projected Annual Growth 2017 to 2022	1.3%	1.4%	1.9%
	Historical Annual Growth 2000 to 2017	36.1%	4.5%	3.5%
	2017 Median Age	31.9	32.3	32.1
<b>HOUSEHOLDS</b>	2017 Estimated Households	2,115	20,870	52,062
	2022 Projected Households	2,263	22,459	56,477
	2010 Census Households	1,376	18,104	46,000
	2000 Census Households	369	12,531	34,421
	Projected Annual Growth 2017 to 2022	1.4%	1.5%	1.7%
	Historical Annual Growth 2000 to 2017	27.8%	3.9%	3.0%
<b>RACE AND ETHNICITY</b>	2017 Estimated White	46.5%	45.5%	51.3%
	2017 Estimated Black or African American	42.6%	40.8%	32.8%
	2017 Estimated Asian or Pacific Islander	4.1%	4.1%	4.1%
	2017 Estimated American Indian or Native Alaskan	0.2%	0.3%	0.3%
	2017 Estimated Other Races	6.7%	9.4%	11.5%
	2017 Estimated Hispanic	8.5%	12.7%	15.9%
<b>INCOME</b>	2017 Estimated Average Household Income	\$67,278	\$61,219	\$62,819
	2017 Estimated Median Household Income	\$63,131	\$55,059	\$55,487
	2017 Estimated Per Capita Income	\$26,248	\$24,018	\$24,051
<b>EDUCATION (AGE 25+)</b>	2017 Estimated Elementary (Grade Level 0 to 8)	1.4%	4.1%	5.2%
	2017 Estimated Some High School (Grade Level 9 to 11)	5.7%	6.0%	6.5%
	2017 Estimated High School Graduate	18.1%	26.2%	29.5%
	2017 Estimated Some College	24.5%	23.2%	21.3%
	2017 Estimated Associates Degree Only	7.0%	8.2%	7.6%
	2017 Estimated Bachelors Degree Only	30.2%	22.3%	21.1%
	2017 Estimated Graduate Degree	13.2%	10.0%	8.8%
<b>BUSINESS</b>	2017 Estimated Total Businesses	112	1,333	2,706
	2017 Estimated Total Employees	1,520	18,090	32,691
	2017 Estimated Employee Population per Business	13.6	13.6	12.1
	2017 Estimated Residential Population per Business	48.5	39.9	50.3

This report was produced using data from private and government sources deemed to be reliable. The information herein is provided without representation or warranty.