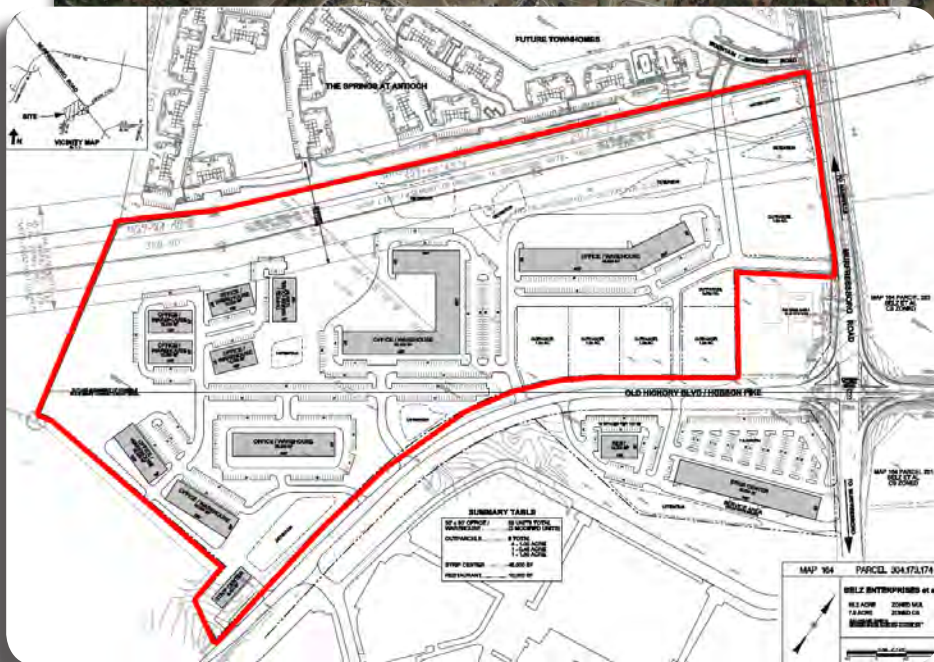
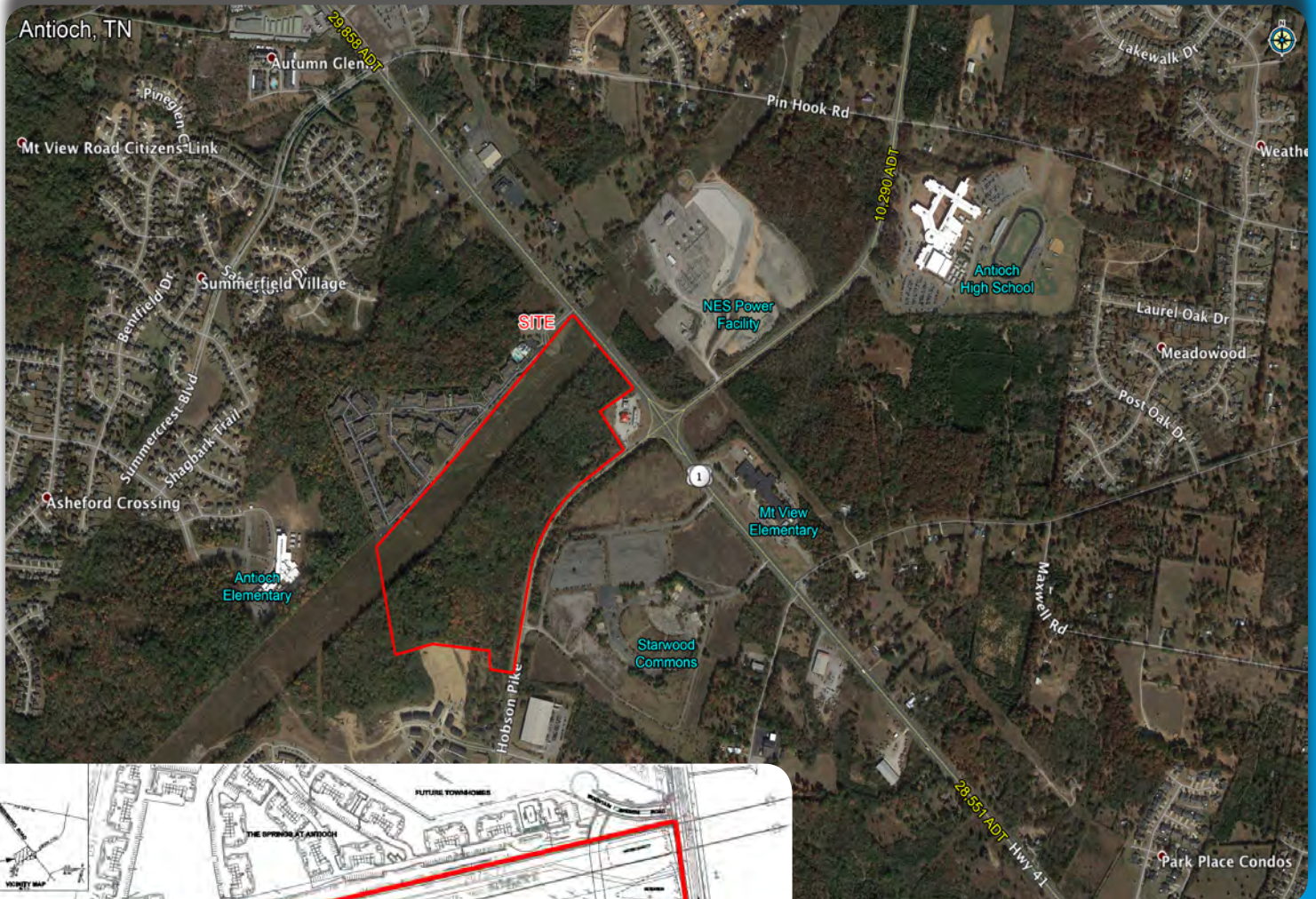


55.2 AC OFFICE WAREHOUSE

Located along Murfreesboro Rd & Hobson Pk, Antioch, TN

Call For Pricing

For SALE



Property Features

- Zoned MUL
- Utilities along Murfreesboro Road

Michael Galpin

mgalpin@bsmproperties.com

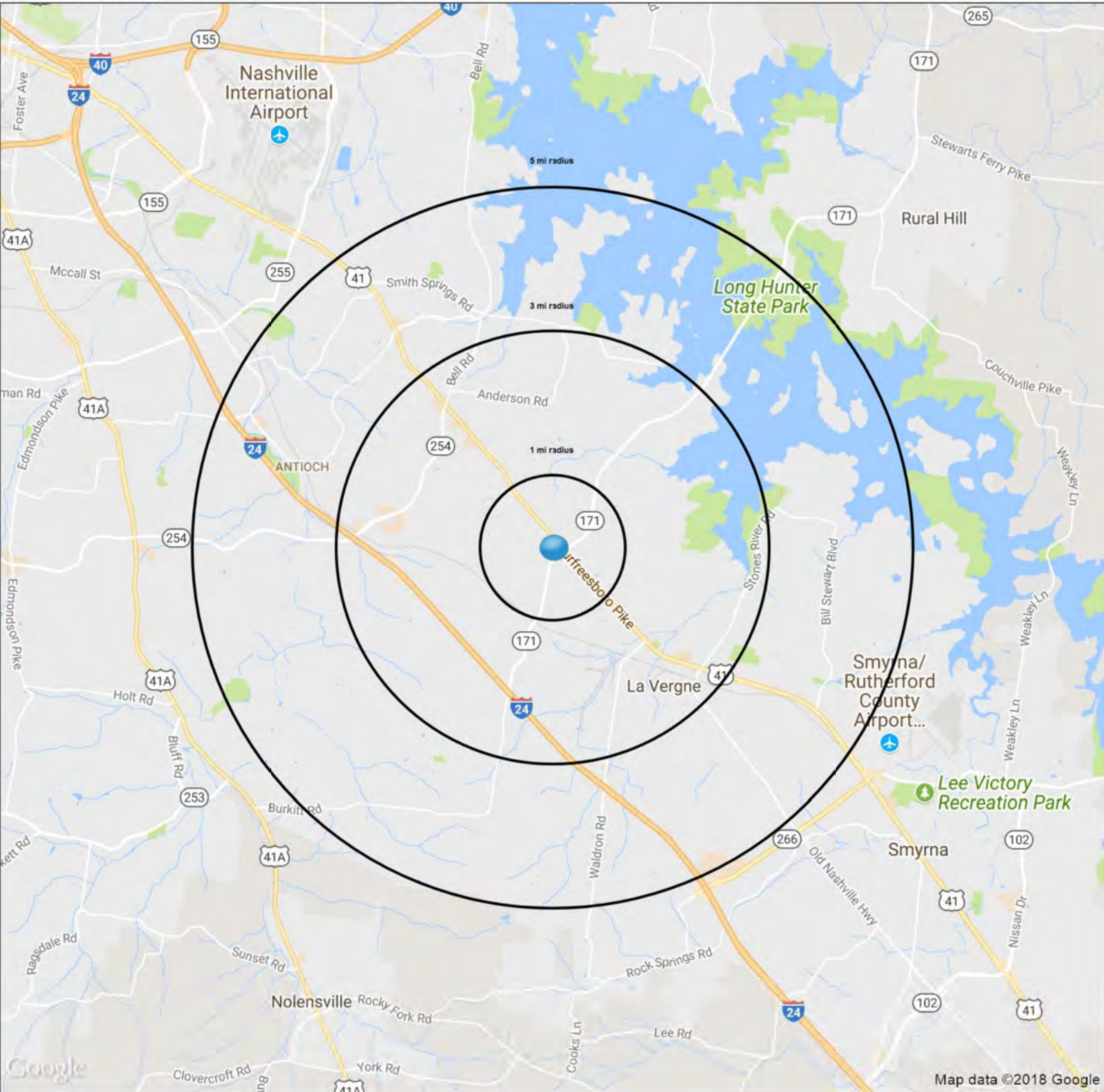
3011 Armory Drive, Suite 120
Nashville, TN 37204

615-373-9511

www.bsmproperties.com

5000 Mountain Springs Dr

Nashville, TN 37013



Demographics

	1 mi radius	3 mi radius	5 mi radius
Population	5,844	53,928	136,723
Households	2,267	21,218	52,341
Population Median Age	31.9	32.0	31.9
5 Yr Pop Growth (Total%)	2.9%	4.5%	7.0%

SUMMARY PROFILE

2000-2010 Census, 2017 Estimates with 2022 Projections
 Calculated using Weighted Block Centroid from Block Groups



Lat/Lon: 36.0433/-86.6096

RS1

5000 Mountain Springs Dr Nashville, TN 37013		1 mi radius	3 mi radius	5 mi radius
POPULATION	2017 Estimated Population	5,844	53,928	136,723
	2022 Projected Population	6,015	56,373	146,348
	2010 Census Population	3,784	46,993	121,297
	2000 Census Population	826	30,344	85,310
	Projected Annual Growth 2017 to 2022	0.6%	0.9%	1.4%
	Historical Annual Growth 2000 to 2017	35.7%	4.6%	3.5%
	2017 Median Age	31.9	32	31.9
HOUSEHOLDS	2017 Estimated Households	2,267	21,218	52,341
	2022 Projected Households	2,419	22,851	56,849
	2010 Census Households	1,458	18,217	45,788
	2000 Census Households	396	12,602	34,320
	Projected Annual Growth 2017 to 2022	1.3%	1.5%	1.7%
	Historical Annual Growth 2000 to 2017	27.8%	4.0%	3.1%
RACE AND ETHNICITY	2017 Estimated White	50.4%	45.6%	50.8%
	2017 Estimated Black or African American	38.8%	40.5%	33.0%
	2017 Estimated Asian or Pacific Islander	3.8%	4.2%	4.2%
	2017 Estimated American Indian or Native Alaskan	0.2%	0.3%	0.3%
	2017 Estimated Other Races	6.8%	9.5%	11.7%
	2017 Estimated Hispanic	9.0%	12.7%	15.9%
INCOME	2017 Estimated Average Household Income	\$65,454	\$65,805	\$66,402
	2017 Estimated Median Household Income	\$63,623	\$55,790	\$56,092
	2017 Estimated Per Capita Income	\$25,392	\$25,905	\$25,428
EDUCATION (AGE 25+)	2017 Estimated Elementary (Grade Level 0 to 8)	1.5%	3.7%	4.7%
	2017 Estimated Some High School (Grade Level 9 to 11)	5.5%	5.8%	6.3%
	2017 Estimated High School Graduate	17.7%	25.4%	28.8%
	2017 Estimated Some College	25.3%	23.8%	21.9%
	2017 Estimated Associates Degree Only	7.3%	8.9%	8.2%
	2017 Estimated Bachelors Degree Only	30.6%	22.8%	21.6%
	2017 Estimated Graduate Degree	12.1%	9.5%	8.5%
BUSINESS	2017 Estimated Total Businesses	112	1,334	2,692
	2017 Estimated Total Employees	1,522	17,862	32,565
	2017 Estimated Employee Population per Business	13.6	13.4	12.1
	2017 Estimated Residential Population per Business	52.2	40.4	50.8

This report was produced using data from private and government sources deemed to be reliable. The information herein is provided without representation or warranty.