

55.2 ACRES OFFICE WAREHOUSE

LOCATED ALONG MURFREESBORO RD & HOBSON PK, ANTIOCH, TN

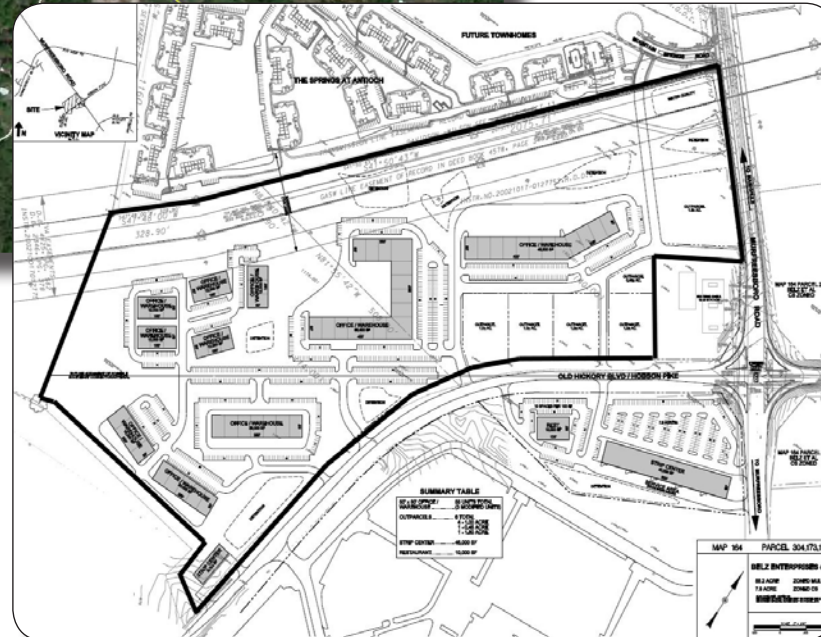


Zoned MUL
Call For Pricing

FOR SALE

55.2 ACRES AVAILABLE

Demographics	1mi	3Mi	5Mi
Population	4,346	54,185	135,050
Avg HH Inc	\$74,419	\$60,609	\$62,897
Med HH Inc	\$64,360	\$52,745	\$53,311



PROPERTY FEATURES

- Utilities along Murfreesboro Road

Michael Galpin
mgalpin@bsmproperties.com

3011 Armory Drive, Suite 120
Nashville, TN 37204
615-373-9511
www.bsmproperties.com