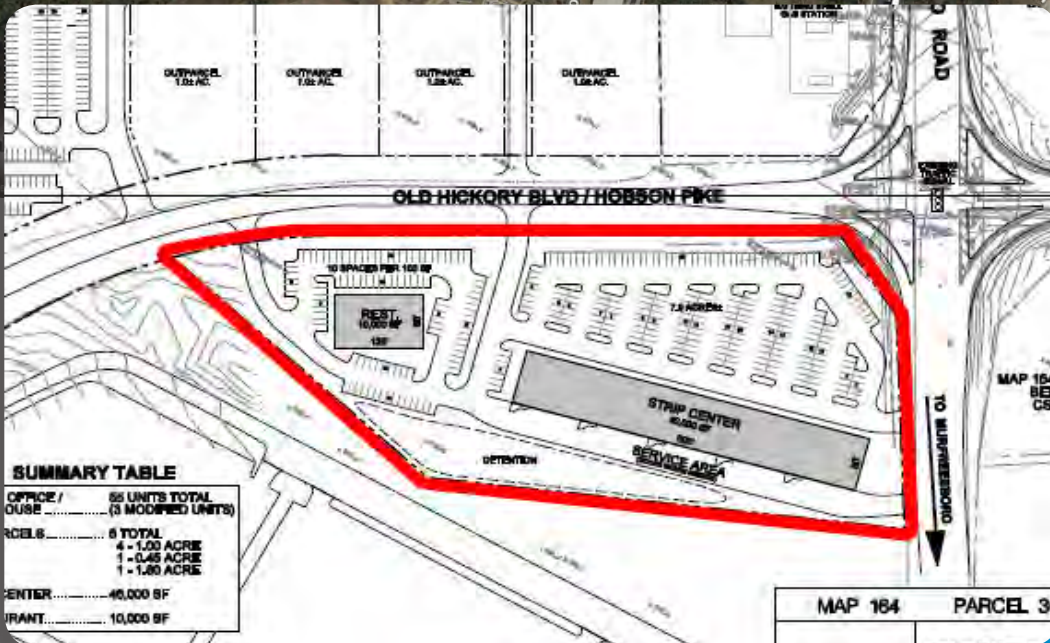
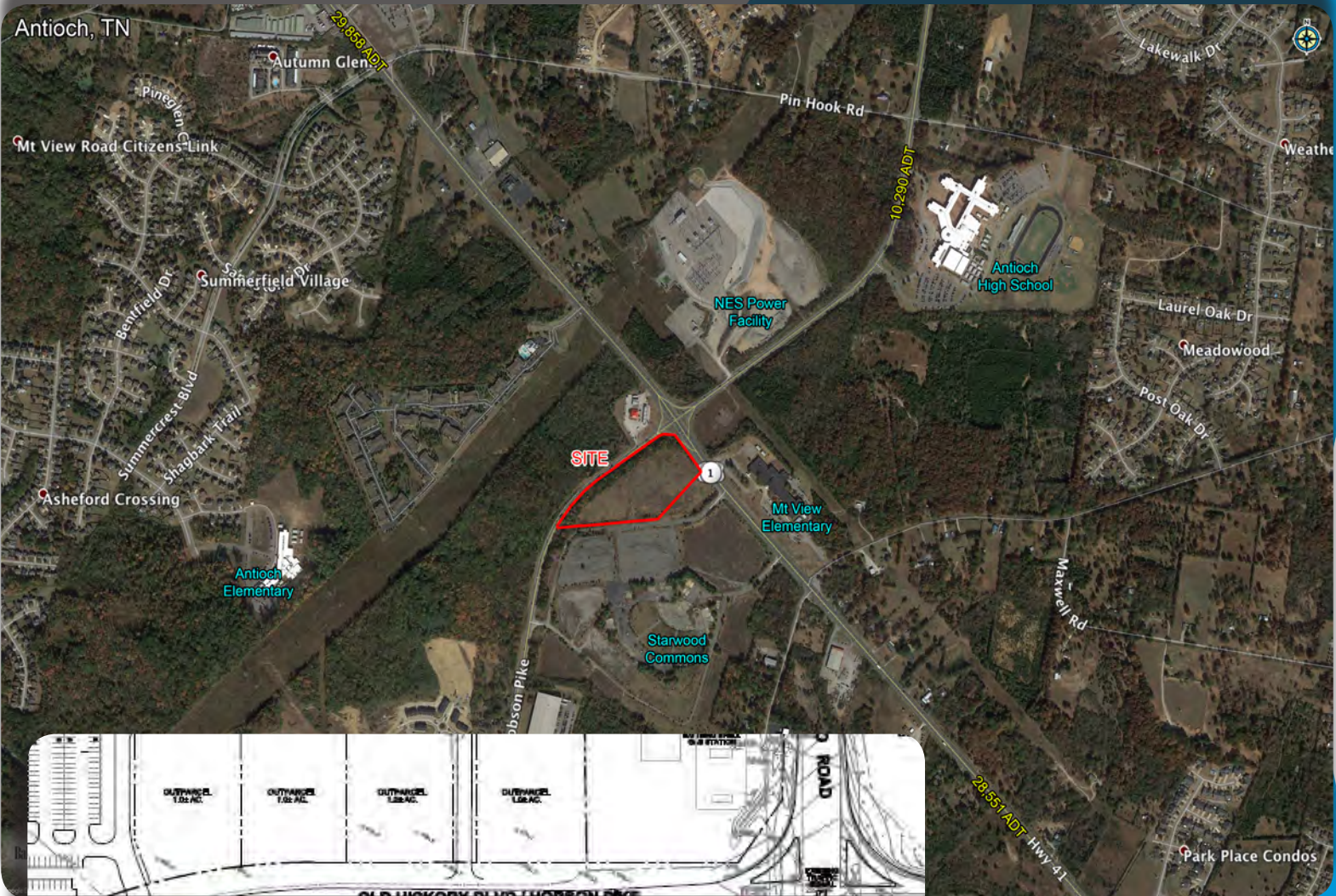


7.93 AC Commercial Site

Corner Lot Murfreesboro Road & Hobson Pike, Antioch, TN

For SALE



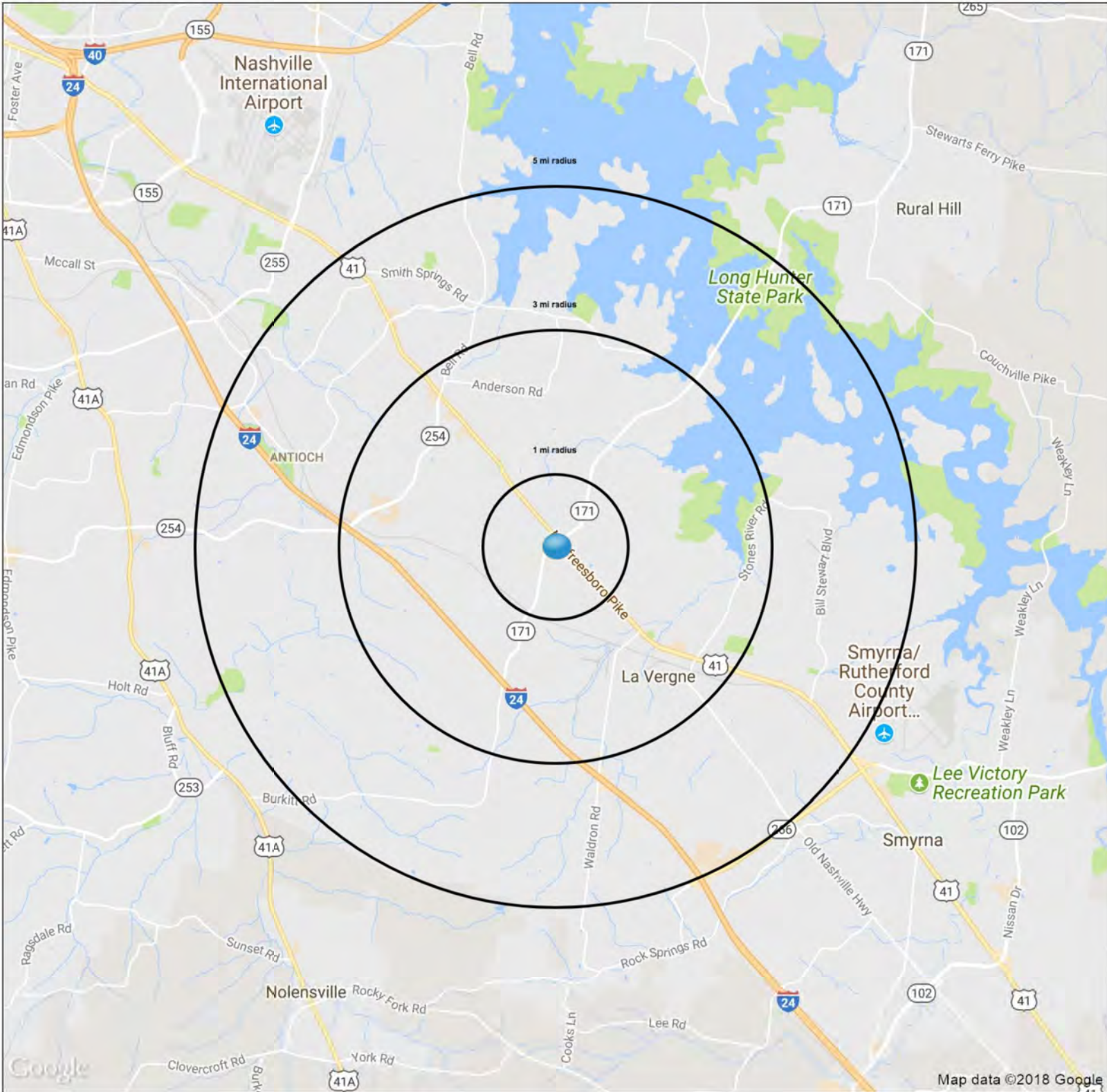
Zoned CS
Call For Pricing

Michael Galpin
mgalpin@bsmproperties.com

3011 Armory Drive, Suite 120
Nashville, TN 37204
615-373-9511
www.bsmproperties.com

1613 Hobson Pike

Nashville, TN 37013



Demographics

| | 1 mi radius | 3 mi radius | 5 mi radius |
|---------------------------------|-------------|-------------|-------------|
| Population | 5,557 | 50,267 | 135,924 |
| Households | 2,141 | 19,680 | 52,127 |
| Population Median Age | 32.0 | 31.9 | 31.9 |
| 5 Yr Pop Growth (Total%) | 2.9% | 4.9% | 7.1% |

SUMMARY PROFILE

2000-2010 Census, 2017 Estimates with 2022 Projections
 Calculated using Weighted Block Centroid from Block Groups



Lat/Lon: 36.0415/-86.6075

RS1

| 1613 Hobson Pike Nashville, TN 37013 | | 1 mi radius | 3 mi radius | 5 mi radius |
|---|---|-------------|-------------|-------------|
| POPULATION | 2017 Estimated Population | 5,557 | 50,267 | 135,924 |
| | 2022 Projected Population | 5,716 | 52,735 | 145,635 |
| | 2010 Census Population | 3,512 | 43,743 | 120,481 |
| | 2000 Census Population | 772 | 27,712 | 84,329 |
| | Projected Annual Growth 2017 to 2022 | 0.6% | 1.0% | 1.4% |
| | Historical Annual Growth 2000 to 2017 | 36.4% | 4.8% | 3.6% |
| | 2017 Median Age | 32 | 31.9 | 31.9 |
| HOUSEHOLDS | 2017 Estimated Households | 2,141 | 19,680 | 52,127 |
| | 2022 Projected Households | 2,283 | 21,208 | 56,634 |
| | 2010 Census Households | 1,338 | 16,871 | 45,568 |
| | 2000 Census Households | 366 | 11,422 | 33,926 |
| | Projected Annual Growth 2017 to 2022 | 1.3% | 1.6% | 1.7% |
| | Historical Annual Growth 2000 to 2017 | 28.5% | 4.3% | 3.2% |
| RACE AND ETHNICITY | 2017 Estimated White | 50.6% | 46.0% | 51.0% |
| | 2017 Estimated Black or African American | 38.5% | 40.4% | 33.0% |
| | 2017 Estimated Asian or Pacific Islander | 3.8% | 4.1% | 4.2% |
| | 2017 Estimated American Indian or Native Alaskan | 0.2% | 0.2% | 0.3% |
| | 2017 Estimated Other Races | 6.9% | 9.3% | 11.5% |
| | 2017 Estimated Hispanic | 9.3% | 12.6% | 15.6% |
| INCOME | 2017 Estimated Average Household Income | \$66,488 | \$66,724 | \$66,540 |
| | 2017 Estimated Median Household Income | \$63,593 | \$56,104 | \$56,240 |
| | 2017 Estimated Per Capita Income | \$25,613 | \$26,138 | \$25,526 |
| EDUCATION (AGE 25+) | 2017 Estimated Elementary (Grade Level 0 to 8) | 1.6% | 3.9% | 4.6% |
| | 2017 Estimated Some High School (Grade Level 9 to 11) | 5.6% | 5.8% | 6.2% |
| | 2017 Estimated High School Graduate | 17.7% | 25.5% | 28.8% |
| | 2017 Estimated Some College | 25.2% | 23.9% | 22.0% |
| | 2017 Estimated Associates Degree Only | 7.3% | 8.7% | 8.2% |
| | 2017 Estimated Bachelors Degree Only | 30.5% | 22.8% | 21.7% |
| | 2017 Estimated Graduate Degree | 12.1% | 9.4% | 8.5% |
| BUSINESS | 2017 Estimated Total Businesses | 112 | 1,322 | 2,780 |
| | 2017 Estimated Total Employees | 1,522 | 18,375 | 33,406 |
| | 2017 Estimated Employee Population per Business | 13.6 | 13.9 | 12.0 |
| | 2017 Estimated Residential Population per Business | 49.7 | 38.0 | 48.9 |

This report was produced using data from private and government sources deemed to be reliable. The information herein is provided without representation or warranty.