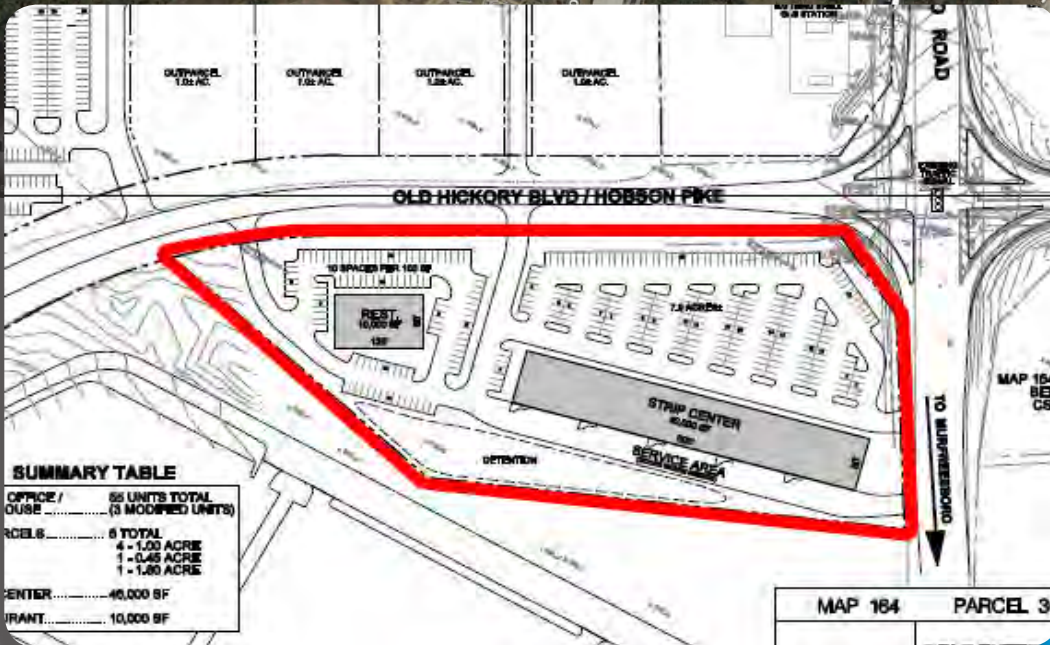
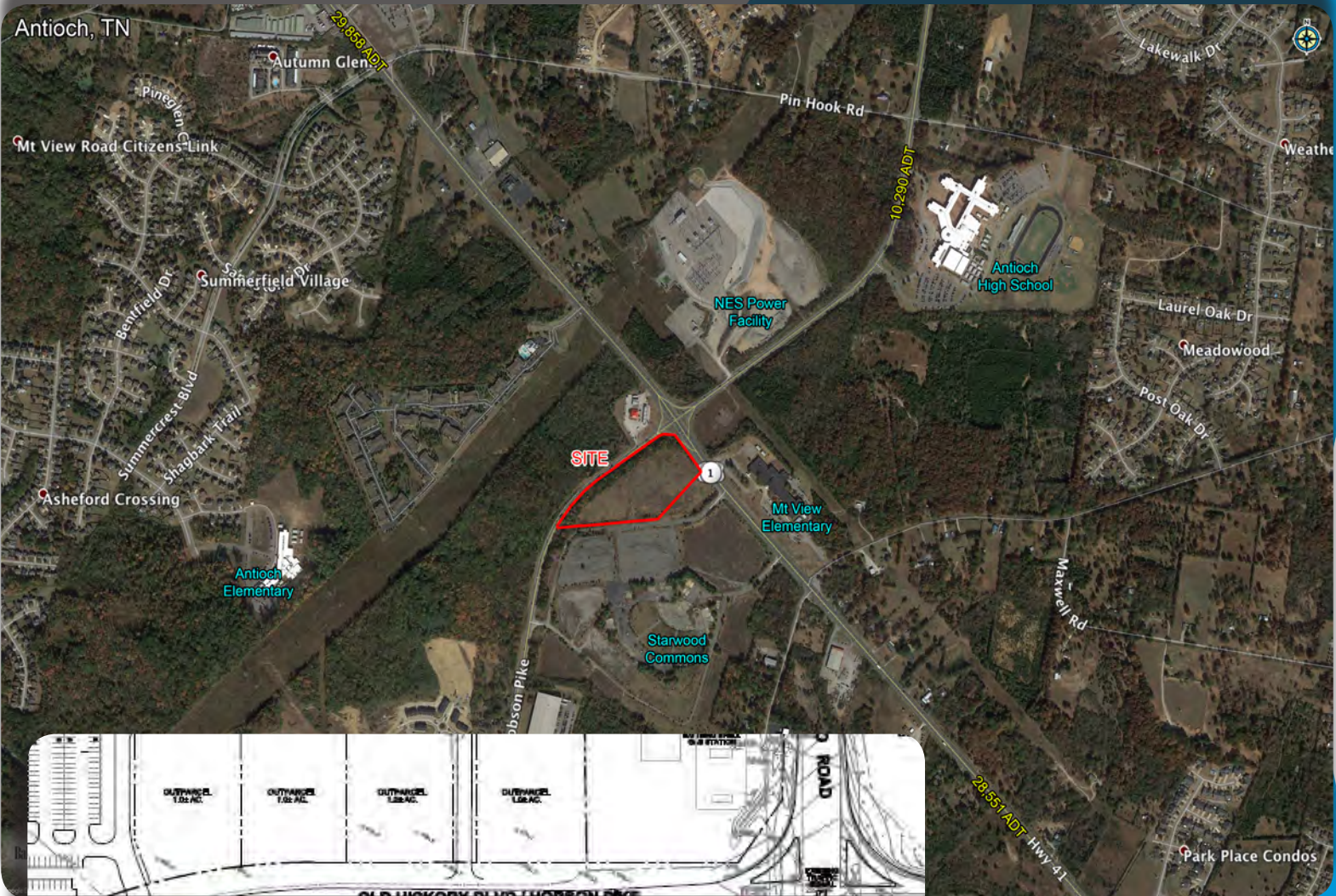


7.93 AC Commercial Site

Corner Lot Murfreesboro Road & Hobson Pike, Antioch, TN

For SALE



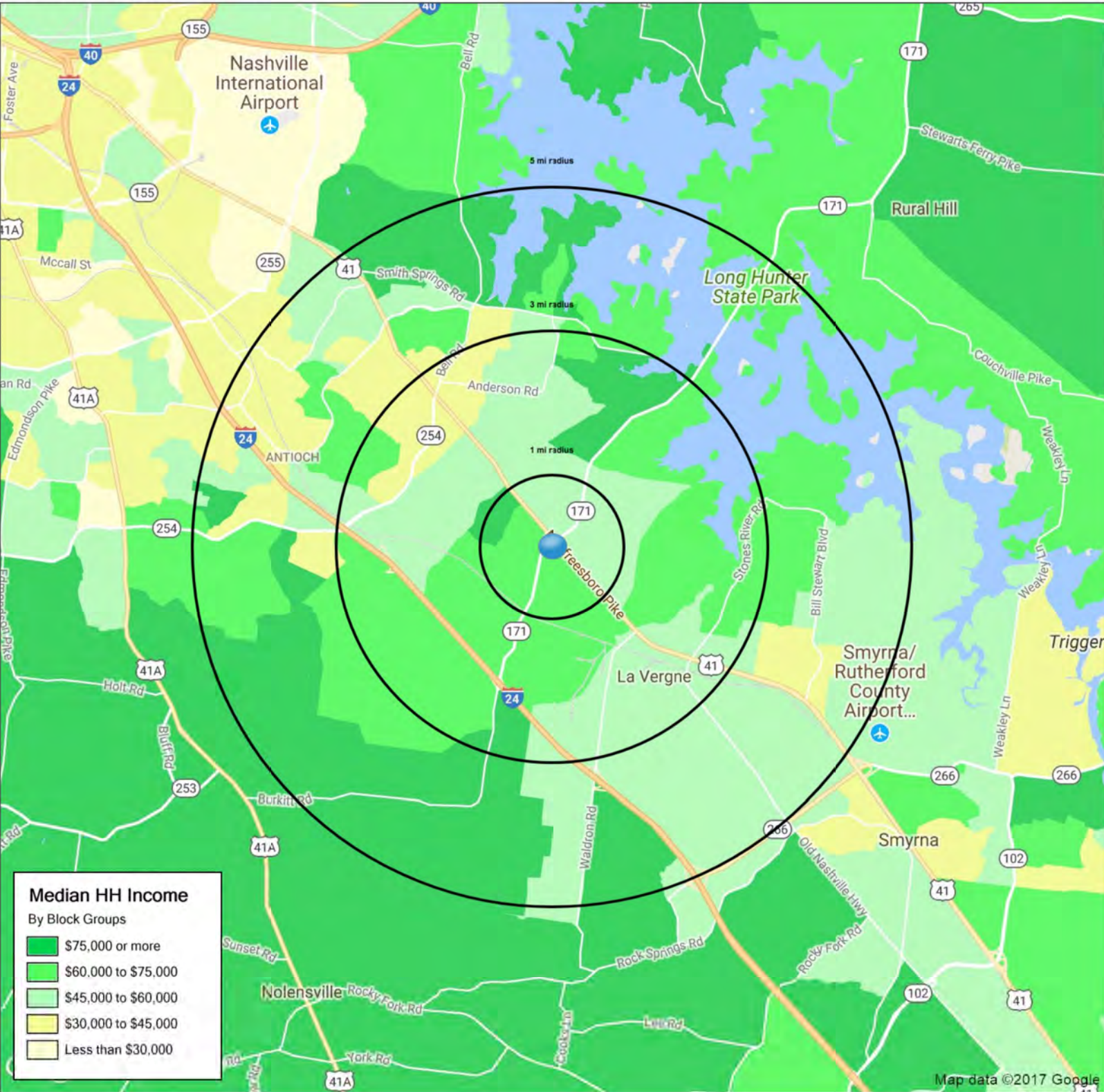
Zoned CS
Call For Pricing

Michael Galpin
mgalpin@bsmproperties.com

3011 Armory Drive, Suite 120
Nashville, TN 37204
615-373-9511
www.bsmproperties.com

1815 Hobson Pike

Nashville, TN 37013



	1 mi radius	3 mi radius	5 mi radius
Population	5,852	50,042	133,985
Average HH Income	\$67,346	\$61,451	\$62,943
Median HH Income	\$61,629	\$55,349	\$55,586
Est. Adj. Daytime Demographics (16+)	2,512	27,860	58,594

SUMMARY PROFILE

2000-2010 Census, 2017 Estimates with 2022 Projections

Calculated using Weighted Block Centroid from Block Groups



Lat/Lon: 36.0415/-86.6072

RS1

1815 Hobson Pike		1 mi radius	3 mi radius	5 mi radius
Nashville, TN 37013				
POPULATION	2017 Estimated Population	5,852	50,042	133,985
	2022 Projected Population	6,204	53,824	146,501
	2010 Census Population	3,848	43,960	119,983
	2000 Census Population	862	27,808	83,890
	Projected Annual Growth 2017 to 2022	1.2%	1.5%	1.9%
	Historical Annual Growth 2000 to 2017	34.0%	4.7%	3.5%
	2017 Median Age	32	32.2	32.1
HOUSEHOLDS	2017 Estimated Households	2,237	19,549	51,339
	2022 Projected Households	2,390	21,054	55,700
	2010 Census Households	1,450	16,955	45,394
	2000 Census Households	401	11,456	33,750
	Projected Annual Growth 2017 to 2022	1.4%	1.5%	1.7%
	Historical Annual Growth 2000 to 2017	26.9%	4.2%	3.1%
RACE AND ETHNICITY	2017 Estimated White	47.5%	45.9%	51.3%
	2017 Estimated Black or African American	41.0%	40.6%	33.0%
	2017 Estimated Asian or Pacific Islander	3.9%	4.0%	4.1%
	2017 Estimated American Indian or Native Alaskan	0.2%	0.2%	0.3%
	2017 Estimated Other Races	7.4%	9.2%	11.3%
	2017 Estimated Hispanic	9.7%	12.5%	15.6%
INCOME	2017 Estimated Average Household Income	\$67,346	\$61,451	\$62,943
	2017 Estimated Median Household Income	\$61,629	\$55,349	\$55,586
	2017 Estimated Per Capita Income	\$25,748	\$24,028	\$24,128
EDUCATION (AGE 25+)	2017 Estimated Elementary (Grade Level 0 to 8)	1.9%	4.2%	5.0%
	2017 Estimated Some High School (Grade Level 9 to 11)	5.8%	6.0%	6.4%
	2017 Estimated High School Graduate	18.8%	26.2%	29.5%
	2017 Estimated Some College	24.6%	23.3%	21.4%
	2017 Estimated Associates Degree Only	6.8%	8.1%	7.7%
	2017 Estimated Bachelors Degree Only	29.4%	22.2%	21.2%
	2017 Estimated Graduate Degree	12.8%	9.9%	8.9%
BUSINESS	2017 Estimated Total Businesses	115	1,340	2,779
	2017 Estimated Total Employees	1,559	18,594	33,404
	2017 Estimated Employee Population per Business	13.5	13.9	12.0
	2017 Estimated Residential Population per Business	50.7	37.3	48.2

This report was produced using data from private and government sources deemed to be reliable. The information herein is provided without representation or warranty.