

# W John Rowan Blvd

W John Rowan Blvd at Padgett Way, Bardstown, KY

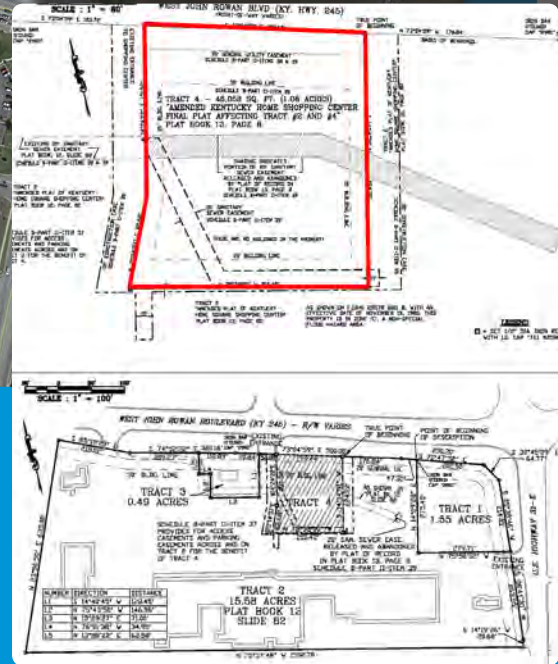
## 1.06 Acres

## FOR SALE



### Property Features

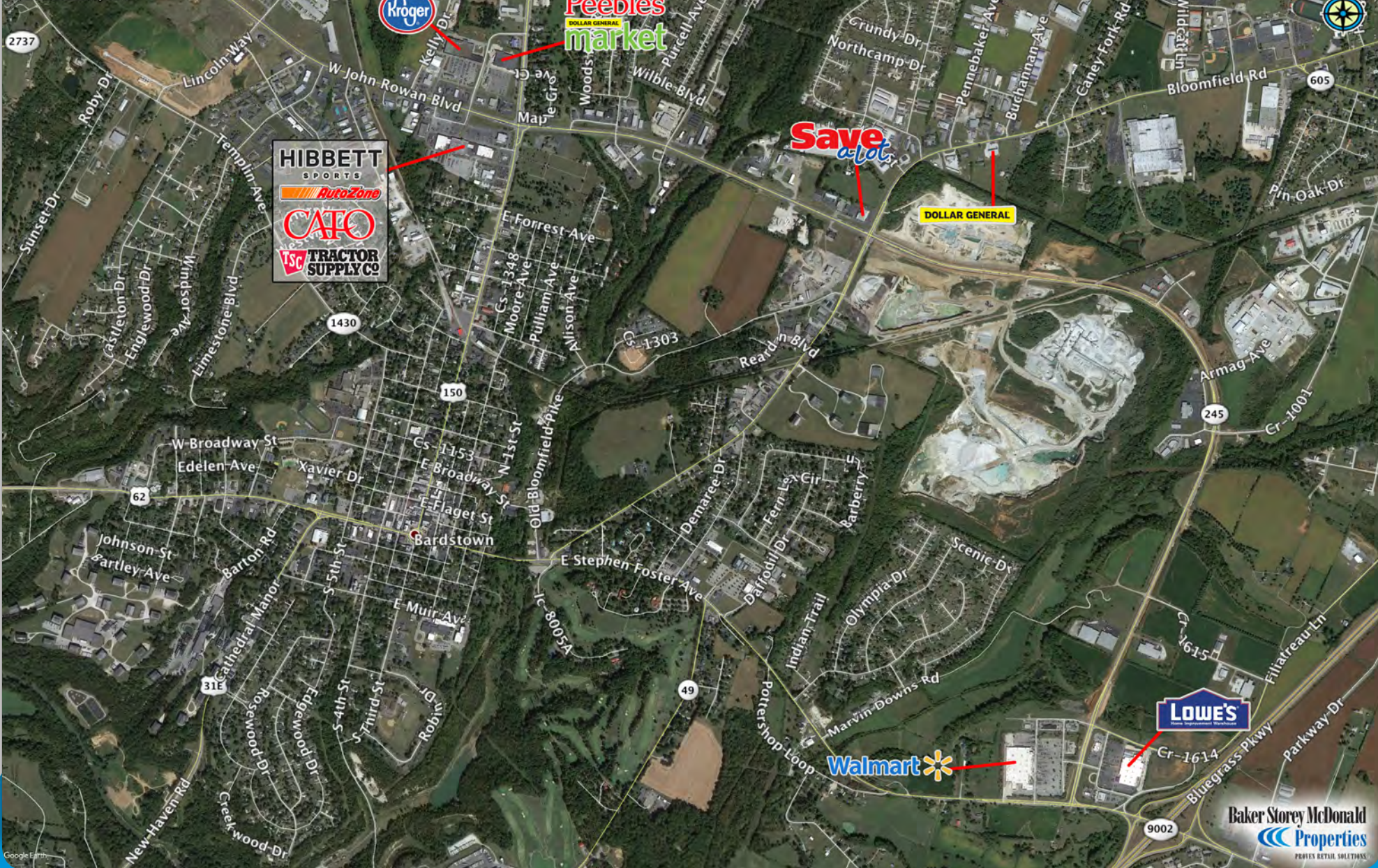
- Located on KY 245 near 31E
- Signaled intersection
- Kroger, Walgreen, Peebles and Tractor Supply anchor the submarket
- 23,793 VPD on W John Rowan Blvd (KY 245)



**Sheldon Griffin**  
[sgriffin@bsmproperties.com](mailto:sgriffin@bsmproperties.com)

3011 Armory Drive, Suite 120  
Nashville, TN 37204  
615-373-9511  
[www.bsmproperties.com](http://www.bsmproperties.com)

Bardstown, KY



# W John Rowan Blvd

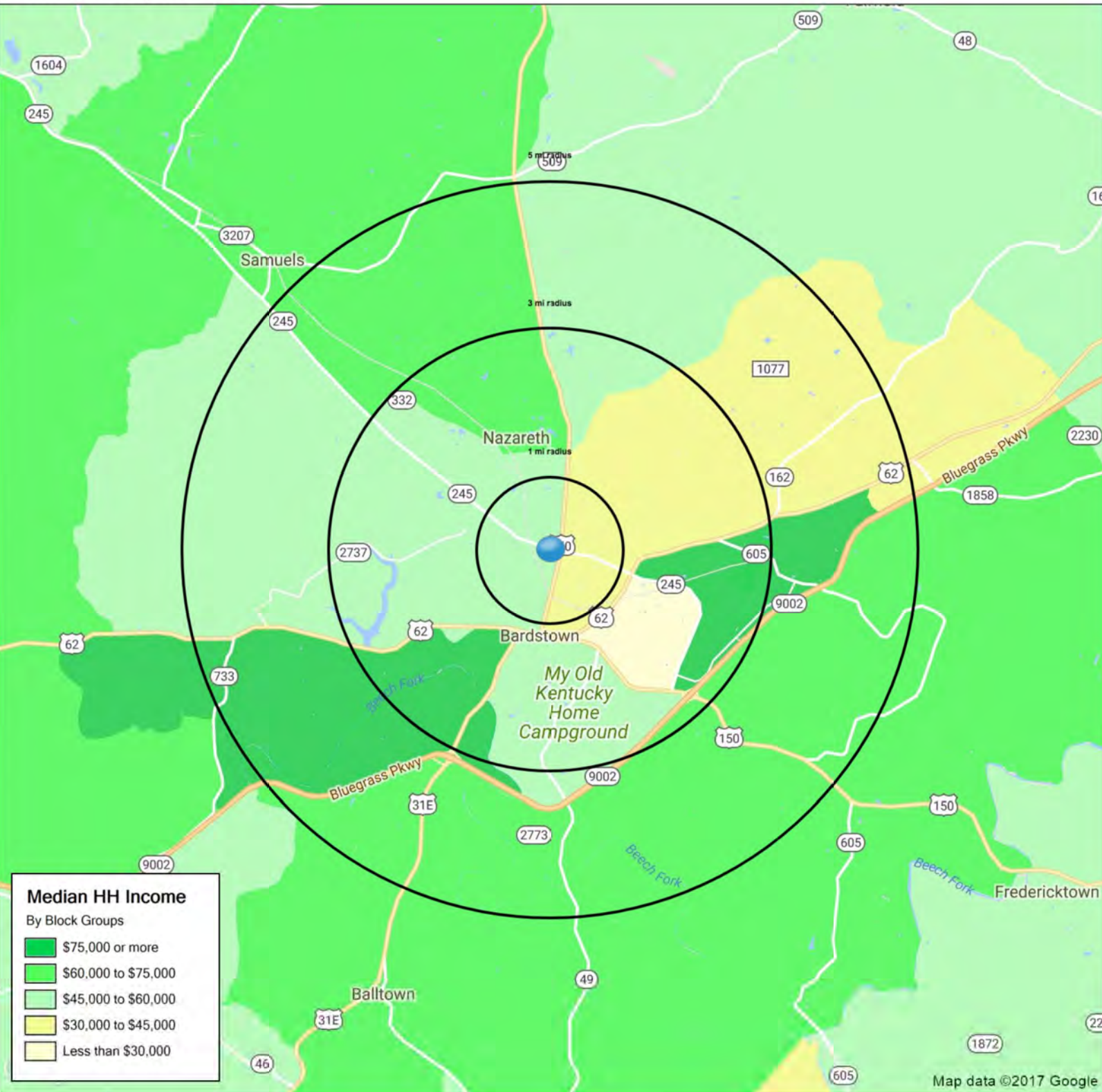
W John Rowan Blvd at Padgett Way, Bardstown, KY

**Baker Storey McDonald Properties**  
 PROVEN RETAIL SOLUTIONS

The information contained herein is believed to be accurate but is not warranted as to the accuracy and may change or be updated without notice. Seller or landlord makes no representation as to the environmental condition of the property and recommends purchaser's or tenants independent investigation.

# KY-245

Bardstovn, KY 40004



	1 mi radius	3 mi radius	5 mi radius
<b>Population</b>	5,027	17,231	25,837
<b>Average HH Income</b>	\$74,384	\$68,735	\$70,093
<b>Median HH Income</b>	\$38,745	\$45,038	\$50,761
<b>Est. Adj. Daytime Demographics (16+)</b>	5,886	17,922	22,547

# SUMMARY PROFILE

2000-2010 Census, 2017 Estimates with 2022 Projections  
 Calculated using Weighted Block Centroid from Block Groups



Lat/Lon: 37.8262/-85.4642

RS1

KY-245		1 mi radius	3 mi radius	5 mi radius
Bardstown, KY 40004				
POPULATION	2017 Estimated Population	5,027	17,231	25,837
	2022 Projected Population	5,160	17,722	26,504
	2010 Census Population	4,801	16,501	24,631
	2000 Census Population	3,605	13,781	20,400
	Projected Annual Growth 2017 to 2022	0.5%	0.6%	0.5%
	Historical Annual Growth 2000 to 2017	2.3%	1.5%	1.6%
	2017 Median Age	34.8	36.4	37.1
HOUSEHOLDS	2017 Estimated Households	2,067	7,044	10,412
	2022 Projected Households	2,188	7,480	11,029
	2010 Census Households	1,928	6,587	9,692
	2000 Census Households	1,473	5,396	7,776
	Projected Annual Growth 2017 to 2022	1.2%	1.2%	1.2%
	Historical Annual Growth 2000 to 2017	2.4%	1.8%	2.0%
RACE AND ETHNICITY	2017 Estimated White	82.4%	84.7%	87.6%
	2017 Estimated Black or African American	12.3%	10.4%	8.1%
	2017 Estimated Asian or Pacific Islander	0.5%	0.7%	0.8%
	2017 Estimated American Indian or Native Alaskan	0.2%	0.1%	0.1%
	2017 Estimated Other Races	4.6%	3.9%	3.3%
	2017 Estimated Hispanic	3.7%	3.1%	2.7%
INCOME	2017 Estimated Average Household Income	\$74,384	\$68,735	\$70,093
	2017 Estimated Median Household Income	\$38,745	\$45,038	\$50,761
	2017 Estimated Per Capita Income	\$30,850	\$28,260	\$28,360
EDUCATION (AGE 25+)	2017 Estimated Elementary (Grade Level 0 to 8)	3.8%	3.4%	3.1%
	2017 Estimated Some High School (Grade Level 9 to 11)	6.2%	8.5%	8.2%
	2017 Estimated High School Graduate	38.4%	41.3%	41.2%
	2017 Estimated Some College	21.9%	20.1%	20.4%
	2017 Estimated Associates Degree Only	13.8%	10.2%	9.5%
	2017 Estimated Bachelors Degree Only	8.3%	9.1%	10.2%
	2017 Estimated Graduate Degree	7.7%	7.4%	7.4%
BUSINESS	2017 Estimated Total Businesses	397	1,056	1,238
	2017 Estimated Total Employees	4,243	12,228	14,377
	2017 Estimated Employee Population per Business	10.7	11.6	11.6
	2017 Estimated Residential Population per Business	12.7	16.3	20.9

This report was produced using data from private and government sources deemed to be reliable. The information herein is provided without representation or warranty.