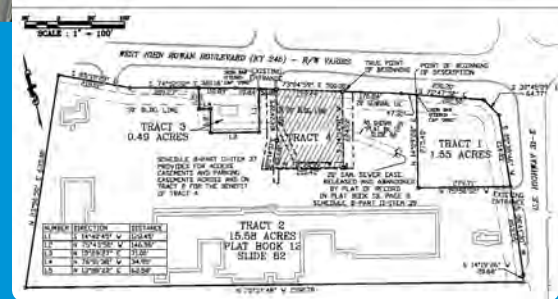


W John Rowan Blvd

W John Rowan Blvd at Padgett Way, Bardstown, KY

1.06 Acres

FOR SALE



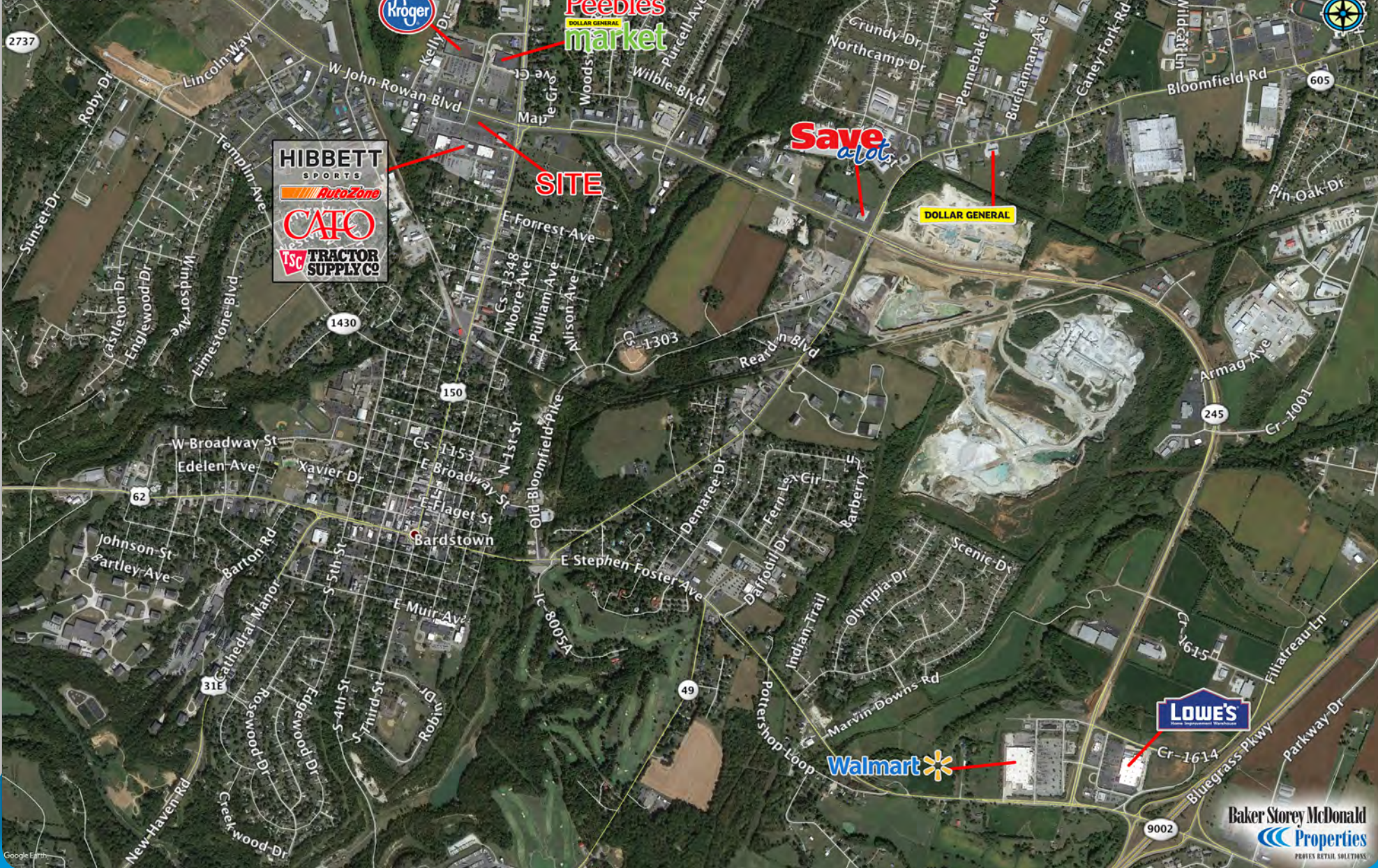
Property Features

- Located on KY 245 near 31E
- Signaled intersection
- Kroger, Walgreen, Peebles and Tractor Supply anchor the submarket
- 23,793 VPD on W John Rowan Blvd (KY 245)

Sheldon Griffin
sgriffin@bsmproperties.com

3011 Armory Drive, Suite 120
 Nashville, TN 37204
 615-373-9511
www.bsmproperties.com

Bardstown, KY



W John Rowan Blvd

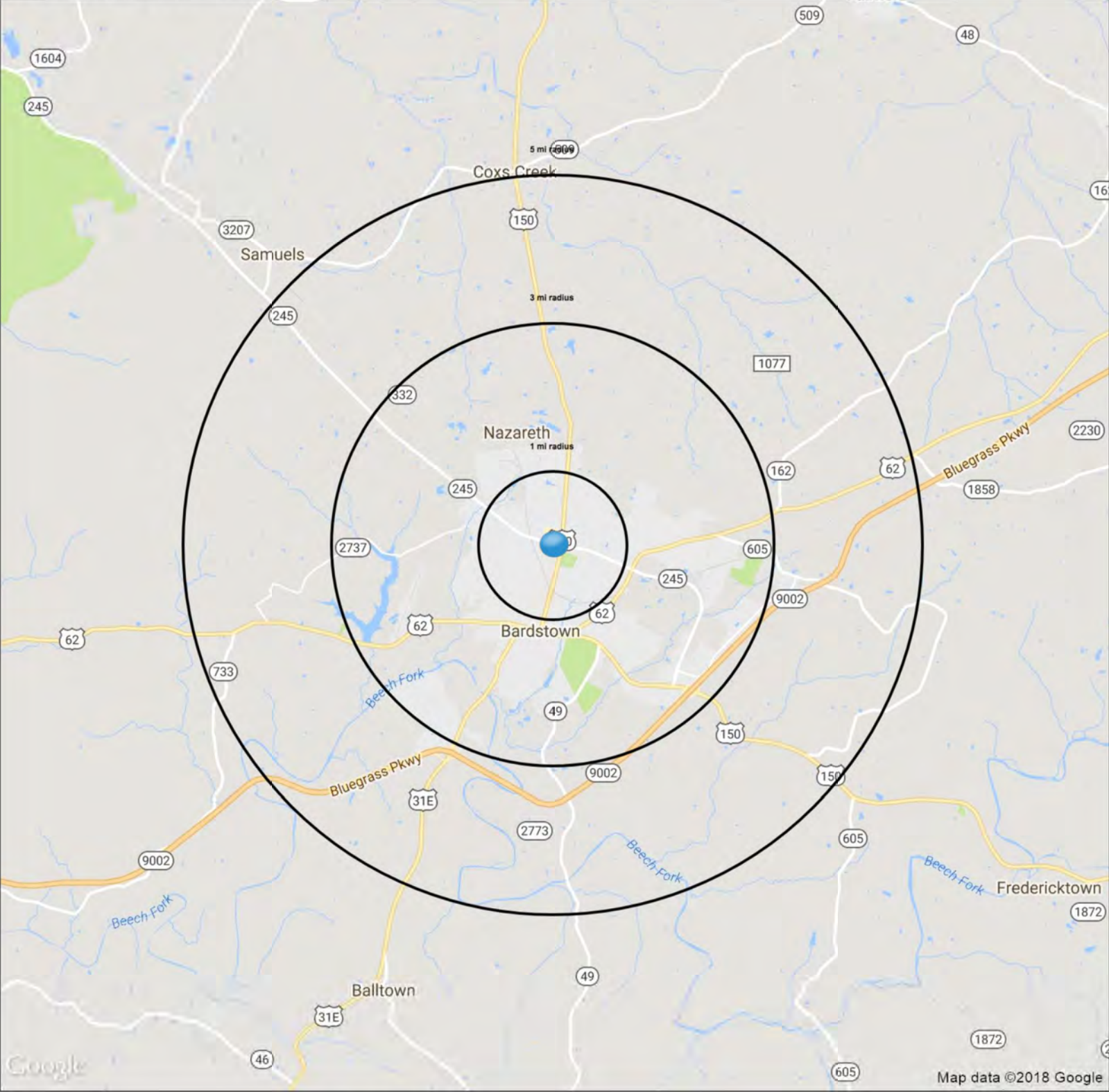
W John Rowan Blvd at Padgett Way, Bardstown, KY

Baker Storey McDonald
Properties
 PROVEN RETAIL SOLUTIONS

The information contained herein is believed to be accurate but is not warranted as to the accuracy and may change or be updated without notice. Seller or landlord makes no representation as to the environmental condition of the property and recommends purchaser's or tenants independent investigation.

225 Kentucky Home Square

Bardstown, KY 40004



Demographics

	1 mi radius	3 mi radius	5 mi radius
Population	5,187	17,771	26,400
Households	2,036	7,030	10,357
Population Median Age	34.9	36.5	37.2
5 Yr Pop Growth (Total%)	4.4%	4.7%	4.5%

SUMMARY PROFILE

2000-2010 Census, 2017 Estimates with 2022 Projections

Calculated using Weighted Block Centroid from Block Groups



Lat/Lon: 37.8258/-85.4639

RS1

225 Kentucky Home Square

Bardstown, KY 40004

1 mi radius 3 mi radius 5 mi radius

	1 mi radius	3 mi radius	5 mi radius	
POPULATION	2017 Estimated Population	5,187	17,771	26,400
	2022 Projected Population	5,417	18,614	27,583
	2010 Census Population	4,849	16,531	24,567
	2000 Census Population	3,654	13,807	20,341
	Projected Annual Growth 2017 to 2022	0.9%	0.9%	0.9%
	Historical Annual Growth 2000 to 2017	2.5%	1.7%	1.8%
	2017 Median Age	34.9	36.5	37.2
HOUSEHOLDS	2017 Estimated Households	2,036	7,030	10,357
	2022 Projected Households	2,154	7,453	10,951
	2010 Census Households	1,948	6,599	9,667
	2000 Census Households	1,493	5,406	7,756
	Projected Annual Growth 2017 to 2022	1.2%	1.2%	1.1%
	Historical Annual Growth 2000 to 2017	2.1%	1.8%	2.0%
RACE AND ETHNICITY	2017 Estimated White	82.3%	84.6%	87.4%
	2017 Estimated Black or African American	12.3%	10.4%	8.1%
	2017 Estimated Asian or Pacific Islander	0.6%	0.8%	0.9%
	2017 Estimated American Indian or Native Alaskan	0.2%	0.1%	0.1%
	2017 Estimated Other Races	4.6%	4.0%	3.5%
	2017 Estimated Hispanic	3.7%	3.2%	2.8%
INCOME	2017 Estimated Average Household Income	\$75,953	\$72,247	\$73,838
	2017 Estimated Median Household Income	\$39,305	\$46,162	\$51,912
	2017 Estimated Per Capita Income	\$30,429	\$28,975	\$29,263
EDUCATION (AGE 25+)	2017 Estimated Elementary (Grade Level 0 to 8)	3.6%	3.2%	2.9%
	2017 Estimated Some High School (Grade Level 9 to 11)	6.4%	8.4%	8.2%
	2017 Estimated High School Graduate	37.0%	39.8%	39.7%
	2017 Estimated Some College	22.3%	20.8%	21.1%
	2017 Estimated Associates Degree Only	14.9%	11.1%	10.3%
	2017 Estimated Bachelors Degree Only	8.5%	9.4%	10.5%
	2017 Estimated Graduate Degree	7.3%	7.2%	7.2%
BUSINESS	2017 Estimated Total Businesses	404	1,059	1,238
	2017 Estimated Total Employees	4,298	12,265	14,377
	2017 Estimated Employee Population per Business	10.6	11.6	11.6
	2017 Estimated Residential Population per Business	12.8	16.8	21.3

This report was produced using data from private and government sources deemed to be reliable. The information herein is provided without representation or warranty.