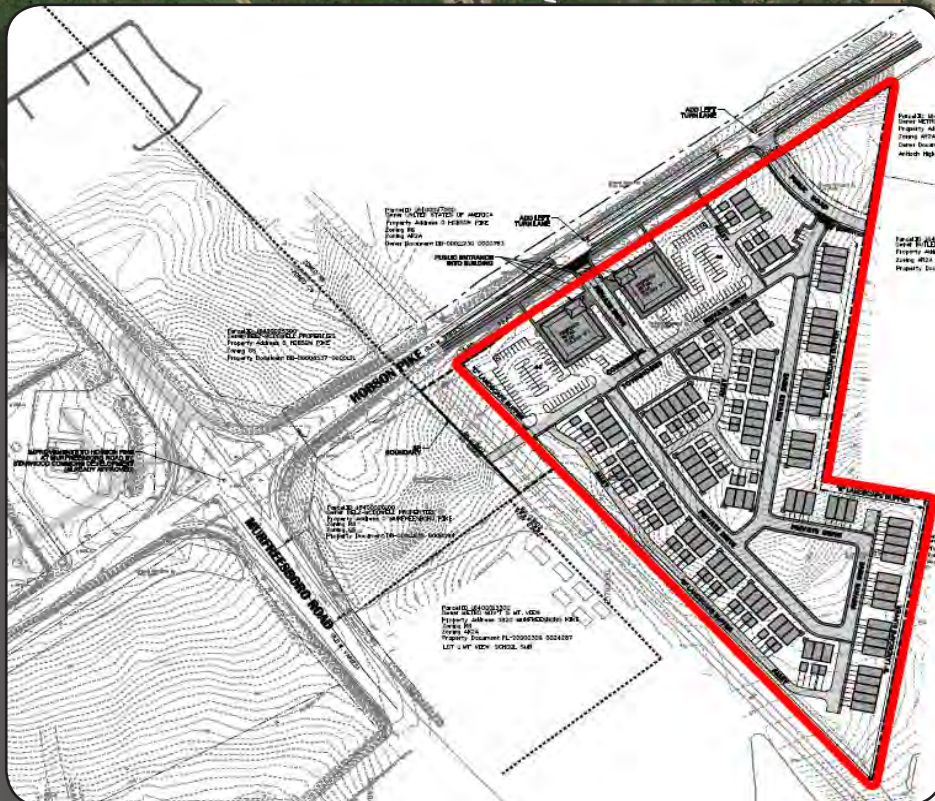
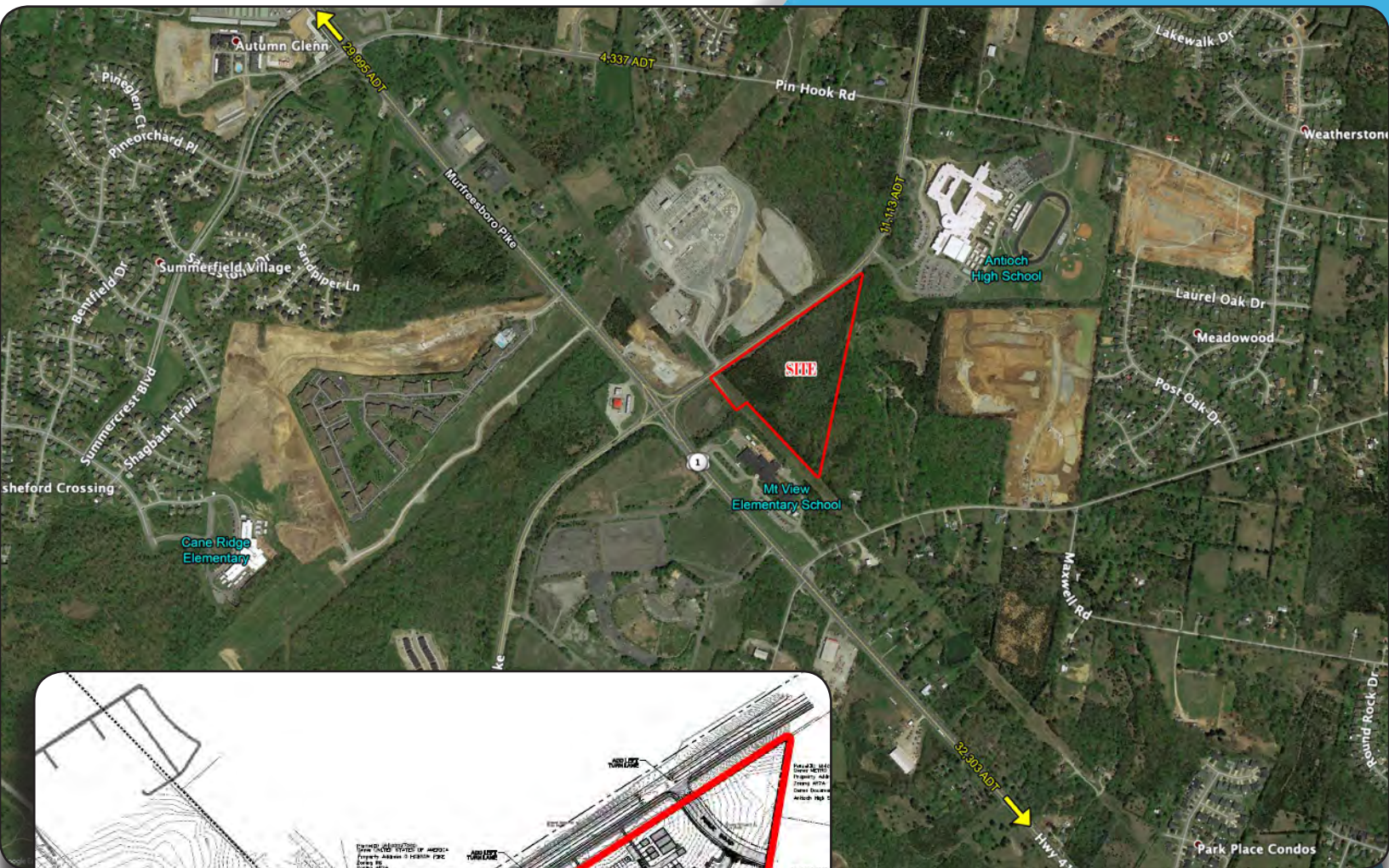


15.77 AC TOWN HOME SITE

Located along Hobson Pike, Antioch, TN

CALL FOR PRICING

FOR SALE



Property Features

- As shown 112 units
- 12.58 Acre Town Home Site
- 2.86 Acre Commercial Site
- SP Zoning

SUMMARY PROFILE

2000-2010 Census, 2018 Estimates with 2023 Projections
 Calculated using Weighted Block Centroid from Block Groups



Lat/Lon: 36.0434/-86.6024

RS1

3800 Murfreesboro Pike		1 mi radius	3 mi radius	5 mi radius
Nashville, TN 37013				
POPULATION	2018 Estimated Population	7,755	53,795	130,631
	2023 Projected Population	7,692	55,211	136,564
	2010 Census Population	4,541	46,083	114,738
	2000 Census Population	1,104	28,800	79,667
	Projected Annual Growth 2018 to 2023	-0.2%	0.5%	0.9%
	Historical Annual Growth 2000 to 2018	33.5%	4.8%	3.6%
	2018 Median Age	32.4	32.1	32.1
HOUSEHOLDS	2018 Estimated Households	2,999	21,223	51,104
	2023 Projected Households	3,138	22,535	54,612
	2010 Census Households	1,669	17,638	43,565
	2000 Census Households	481	11,660	32,026
	Projected Annual Growth 2018 to 2023	0.9%	1.2%	1.4%
	Historical Annual Growth 2000 to 2018	29.1%	4.6%	3.3%
RACE AND ETHNICITY	2018 Estimated White	51.6%	46.5%	50.8%
	2018 Estimated Black or African American	36.1%	39.4%	33.2%
	2018 Estimated Asian or Pacific Islander	3.4%	4.1%	4.4%
	2018 Estimated American Indian or Native Alaskan	0.3%	0.3%	0.3%
	2018 Estimated Other Races	8.6%	9.7%	11.4%
	2018 Estimated Hispanic	11.9%	13.1%	15.0%
INCOME	2018 Estimated Average Household Income	\$52,033	\$69,976	\$70,300
	2018 Estimated Median Household Income	\$60,621	\$58,167	\$56,988
	2018 Estimated Per Capita Income	\$20,121	\$27,626	\$27,513
EDUCATION (AGE 25+)	2018 Estimated Elementary (Grade Level 0 to 8)	3.1%	4.2%	4.7%
	2018 Estimated Some High School (Grade Level 9 to 11)	4.7%	4.8%	5.7%
	2018 Estimated High School Graduate	22.0%	25.7%	28.1%
	2018 Estimated Some College	22.0%	23.4%	21.7%
	2018 Estimated Associates Degree Only	9.4%	9.2%	8.6%
	2018 Estimated Bachelors Degree Only	25.6%	22.2%	22.0%
	2018 Estimated Graduate Degree	13.1%	10.5%	9.2%
BUSINESS	2018 Estimated Total Businesses	106	1,224	2,679
	2018 Estimated Total Employees	1,580	17,643	32,104
	2018 Estimated Employee Population per Business	14.9	14.4	12.0
	2018 Estimated Residential Population per Business	73.3	43.9	48.8

This report was produced using data from private and government sources deemed to be reliable. The information herein is provided without representation or warranty.