

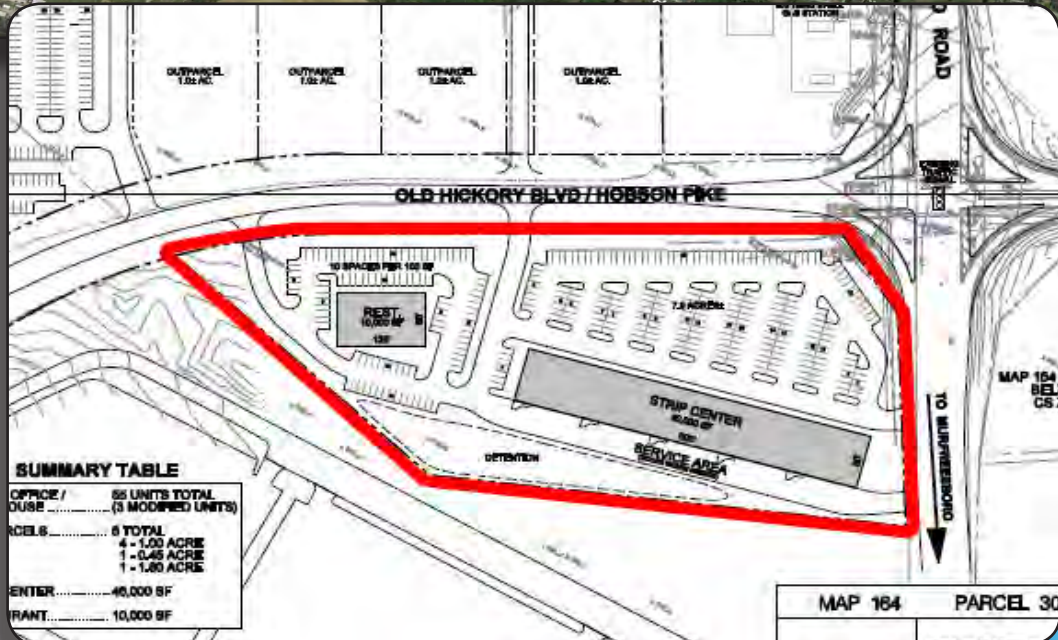
7.93 AC COMMERCIAL SITE

Corner Lot Murfreesboro Road & Hobson Pike, Antioch, TN

FOR SALE



Zoned CS
Call For Pricing



SUMMARY PROFILE

2000-2010 Census, 2018 Estimates with 2023 Projections

Calculated using Weighted Block Centroid from Block Groups



Lat/Lon: 36.0414/-86.6069

RS1

3812 Murfreesboro Pike		1 mi radius	3 mi radius	5 mi radius
Nashville, TN 37013				
POPULATION	2018 Estimated Population	6,463	51,231	135,645
	2023 Projected Population	6,428	52,119	141,631
	2010 Census Population	3,745	43,169	118,869
	2000 Census Population	844	27,140	82,959
	Projected Annual Growth 2018 to 2023	-0.1%	0.3%	0.9%
	Historical Annual Growth 2000 to 2018	37.0%	4.9%	3.5%
	2018 Median Age	32.4	32.1	32.1
HOUSEHOLDS	2018 Estimated Households	2,534	20,405	53,006
	2023 Projected Households	2,656	21,611	56,645
	2010 Census Households	1,414	16,647	45,037
	2000 Census Households	392	11,151	33,388
	Projected Annual Growth 2018 to 2023	1.0%	1.2%	1.4%
	Historical Annual Growth 2000 to 2018	30.4%	4.6%	3.3%
RACE AND ETHNICITY	2018 Estimated White	50.2%	46.6%	50.9%
	2018 Estimated Black or African American	38.1%	39.4%	32.7%
	2018 Estimated Asian or Pacific Islander	3.9%	4.2%	4.4%
	2018 Estimated American Indian or Native Alaskan	0.3%	0.3%	0.3%
	2018 Estimated Other Races	7.6%	9.5%	11.6%
	2018 Estimated Hispanic	10.3%	12.8%	15.6%
INCOME	2018 Estimated Average Household Income	\$57,928	\$69,044	\$70,146
	2018 Estimated Median Household Income	\$62,068	\$57,717	\$57,024
	2018 Estimated Per Capita Income	\$22,716	\$27,521	\$27,421
EDUCATION (AGE 25+)	2018 Estimated Elementary (Grade Level 0 to 8)	2.3%	4.2%	4.9%
	2018 Estimated Some High School (Grade Level 9 to 11)	4.5%	4.7%	5.8%
	2018 Estimated High School Graduate	20.1%	25.0%	28.1%
	2018 Estimated Some College	21.6%	23.1%	21.5%
	2018 Estimated Associates Degree Only	9.8%	9.3%	8.5%
	2018 Estimated Bachelors Degree Only	28.1%	22.8%	21.9%
	2018 Estimated Graduate Degree	13.6%	10.8%	9.2%
BUSINESS	2018 Estimated Total Businesses	113	1,277	2,697
	2018 Estimated Total Employees	1,586	18,402	31,991
	2018 Estimated Employee Population per Business	14.0	14.4	11.9
	2018 Estimated Residential Population per Business	57.2	40.1	50.3

This report was produced using data from private and government sources deemed to be reliable. The information herein is provided without representation or warranty.