

AUTO DEALERSHIP

5300 & 5312 Mt View Road, Antioch, TN

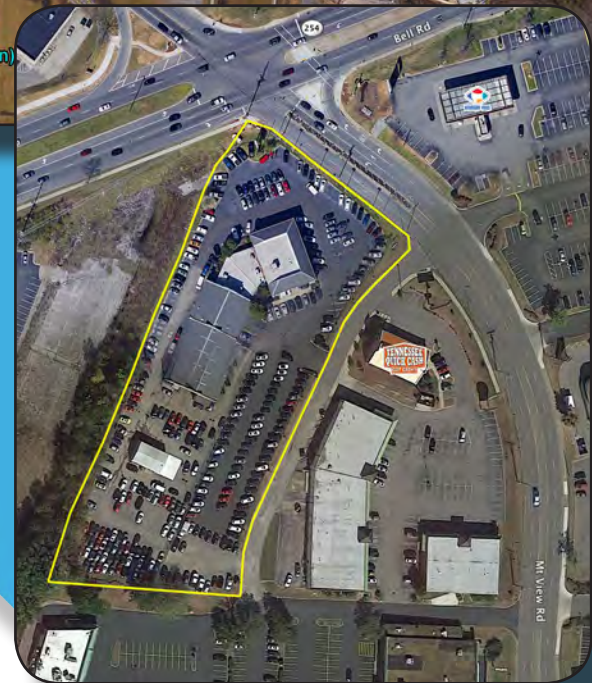
5.3± ACRES / 23,000± SF BUILDING

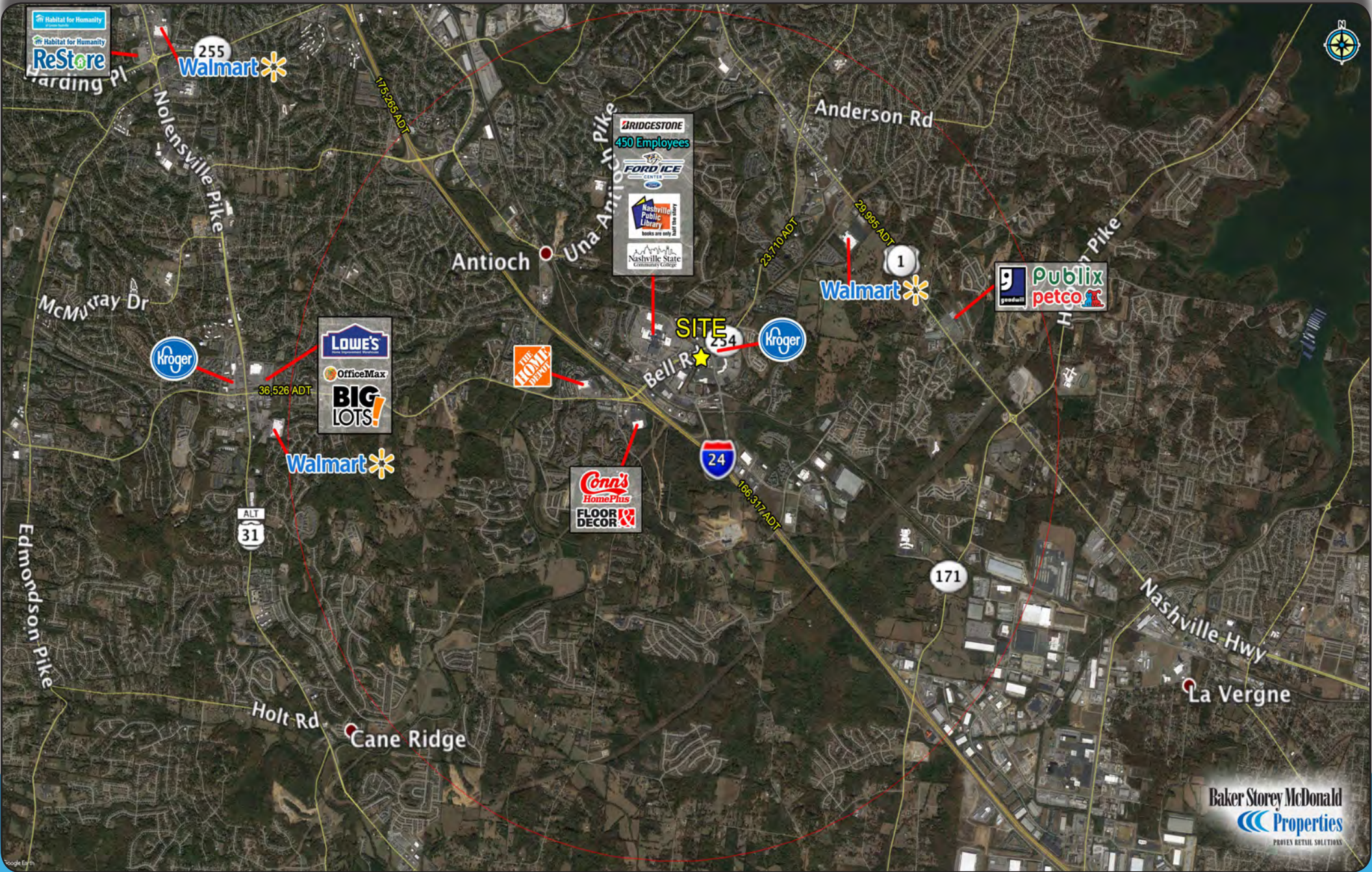
FOR LEASE



Property Features

- Located on the corner of Hickory Hollow Parkway and Mt. View Road
- Building contains 9,000 SF of showroom and 14,000 SF of repair space built in 1987
- Showroom and shop can be leased separately
- Commercial PUD allowing for automotive sales and repair
- Located conveniently near I-24
- Proven automotive location for 30 years
- Traffic count exceeds 40,000 cars per day





Baker Storey McDonald
Properties
PROVIDES RETAIL SOLUTIONS

The information contained herein is believed to be accurate but is not warranted as to the accuracy and may change or be updated without notice. Seller or landlord makes no representation as to the environmental condition of the property and recommends purchaser's or tenants independent investigation.

SUMMARY PROFILE

2000-2010 Census, 2018 Estimates with 2023 Projections

Calculated using Weighted Block Centroid from Block Groups



Lat/Lon: 36.0491/-86.6495

RS1

5300 Mt View Rd		1 mi radius	3 mi radius	5 mi radius
Nashville, TN 37013				
POPULATION	2018 Estimated Population	10,779	78,777	171,467
	2023 Projected Population	10,683	78,967	173,209
	2010 Census Population	8,991	69,031	152,449
	2000 Census Population	6,605	52,058	112,267
	Projected Annual Growth 2018 to 2023	-0.2%	-	0.2%
	Historical Annual Growth 2000 to 2018	3.5%	2.9%	2.9%
	2018 Median Age	29.6	31.2	31.9
HOUSEHOLDS	2018 Estimated Households	5,234	32,315	68,386
	2023 Projected Households	5,491	34,161	72,610
	2010 Census Households	4,168	27,180	58,362
	2000 Census Households	3,249	22,089	46,312
	Projected Annual Growth 2018 to 2023	1.0%	1.1%	1.2%
	Historical Annual Growth 2000 to 2018	3.4%	2.6%	2.6%
RACE AND ETHNICITY	2018 Estimated White	37.1%	46.4%	52.4%
	2018 Estimated Black or African American	47.2%	34.9%	28.5%
	2018 Estimated Asian or Pacific Islander	4.2%	4.8%	6.2%
	2018 Estimated American Indian or Native Alaskan	0.3%	0.3%	0.3%
	2018 Estimated Other Races	11.1%	13.5%	12.5%
	2018 Estimated Hispanic	13.9%	19.1%	17.8%
INCOME	2018 Estimated Average Household Income	\$61,372	\$65,339	\$71,262
	2018 Estimated Median Household Income	\$49,111	\$52,337	\$57,293
	2018 Estimated Per Capita Income	\$29,883	\$26,818	\$28,647
EDUCATION (AGE 25+)	2018 Estimated Elementary (Grade Level 0 to 8)	3.7%	5.6%	5.8%
	2018 Estimated Some High School (Grade Level 9 to 11)	5.9%	6.3%	6.5%
	2018 Estimated High School Graduate	23.4%	26.1%	25.2%
	2018 Estimated Some College	22.1%	20.5%	19.8%
	2018 Estimated Associates Degree Only	8.6%	8.6%	8.0%
	2018 Estimated Bachelors Degree Only	24.9%	23.0%	23.5%
	2018 Estimated Graduate Degree	11.3%	9.9%	11.2%
BUSINESS	2018 Estimated Total Businesses	399	1,489	4,413
	2018 Estimated Total Employees	4,546	13,212	49,165
	2018 Estimated Employee Population per Business	11.4	8.9	11.1
	2018 Estimated Residential Population per Business	27.0	52.9	38.9

This report was produced using data from private and government sources deemed to be reliable. The information herein is provided without representation or warranty.