

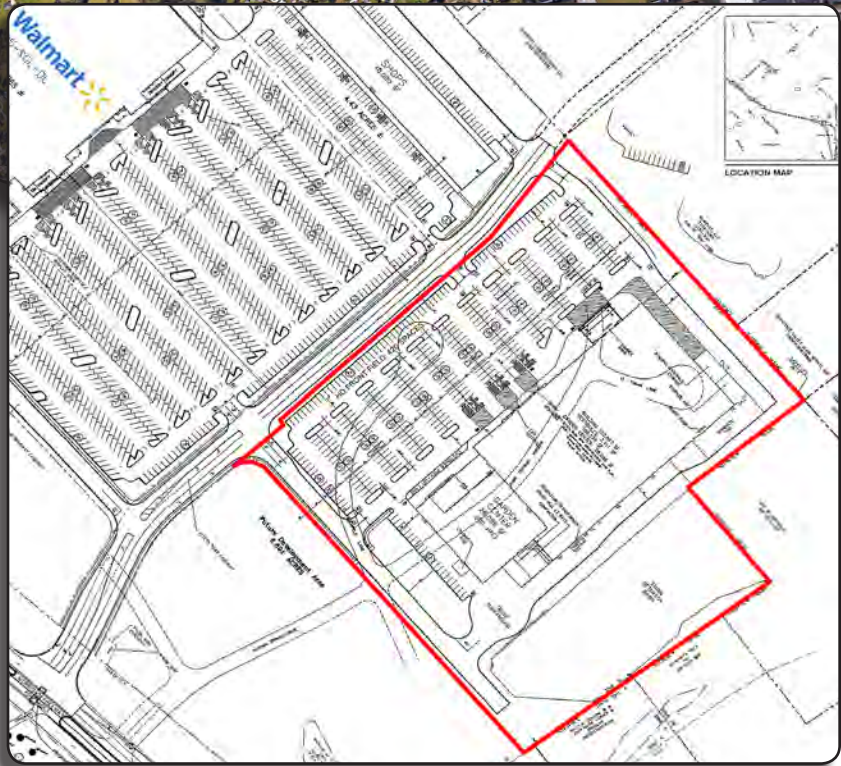
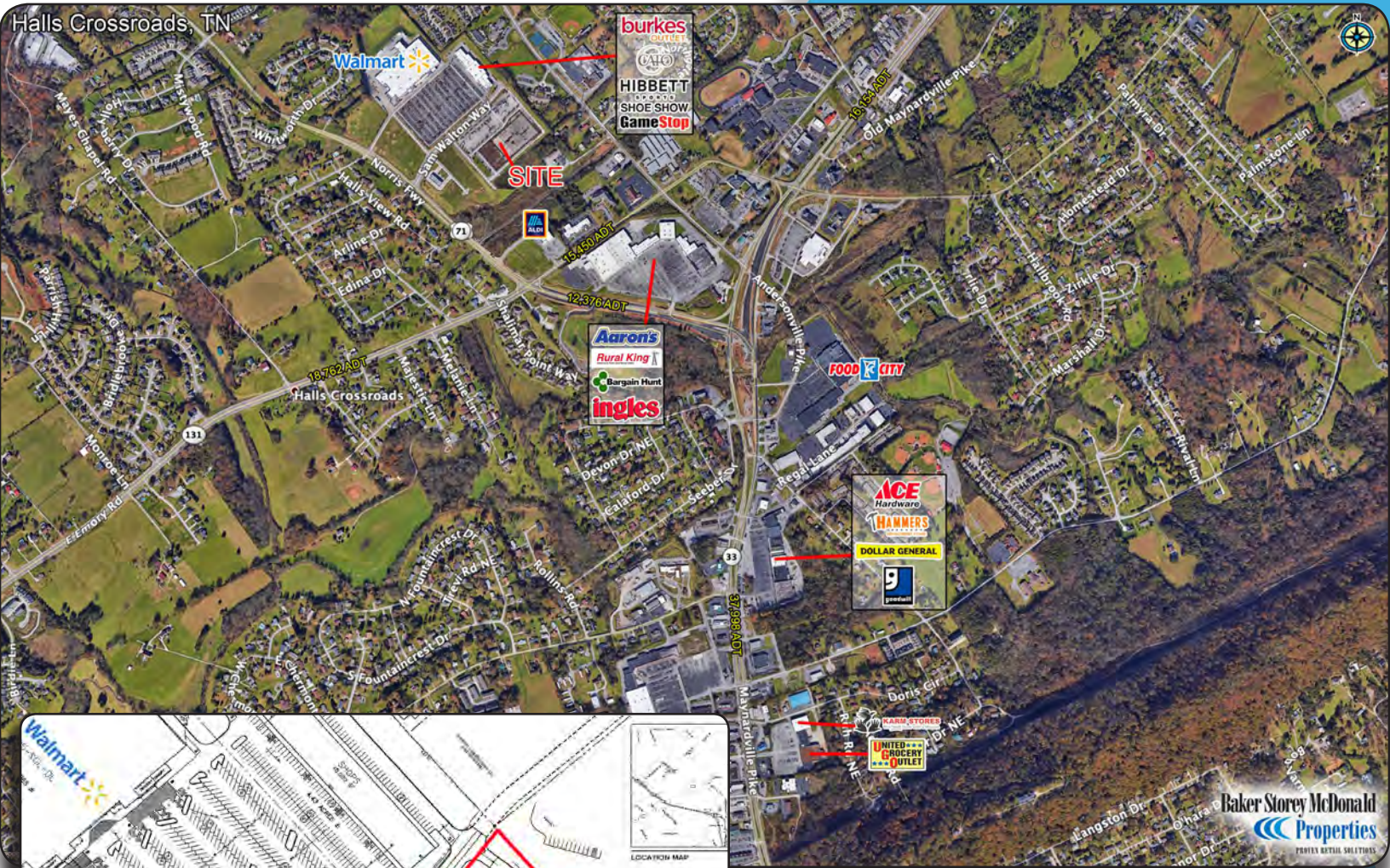


HALLS CROSSROADS

Sam Walton Way, Knoxville, TN

13.47 Acres

SUB GROUND LEASE



Property Features

- Across from Walmart
- Sitework completed, portions of parking lot and pad are complete
- Ideal for retail development

SUMMARY PROFILE

2000-2010 Census, 2018 Estimates with 2023 Projections

Calculated using Weighted Block Centroid from Block Groups



Lat/Lon: 36.0871/-83.9355

RS1

Sam Walton Way Knoxville, TN 37938		1 mi radius	3 mi radius	5 mi radius
POPULATION	2018 Estimated Population	3,327	31,709	74,356
	2023 Projected Population	3,484	33,372	78,614
	2010 Census Population	3,247	29,798	69,053
	2000 Census Population	2,671	24,796	57,930
	Projected Annual Growth 2018 to 2023	0.9%	1.0%	1.1%
	Historical Annual Growth 2000 to 2018	1.4%	1.5%	1.6%
	2018 Median Age	43.7	39.8	38.7
HOUSEHOLDS	2018 Estimated Households	1,375	12,805	31,078
	2023 Projected Households	1,410	13,198	32,210
	2010 Census Households	1,309	11,693	28,024
	2000 Census Households	1,029	9,809	23,680
	Projected Annual Growth 2018 to 2023	0.5%	0.6%	0.7%
	Historical Annual Growth 2000 to 2018	1.9%	1.7%	1.7%
RACE AND ETHNICITY	2018 Estimated White	96.3%	94.3%	92.0%
	2018 Estimated Black or African American	0.9%	1.4%	3.4%
	2018 Estimated Asian or Pacific Islander	1.2%	0.9%	1.0%
	2018 Estimated American Indian or Native Alaskan	0.1%	0.2%	0.2%
	2018 Estimated Other Races	1.5%	3.3%	3.4%
	2018 Estimated Hispanic	2.4%	3.9%	3.9%
INCOME	2018 Estimated Average Household Income	\$85,310	\$77,735	\$72,100
	2018 Estimated Median Household Income	\$65,315	\$62,897	\$59,090
	2018 Estimated Per Capita Income	\$35,258	\$31,406	\$30,310
EDUCATION (AGE 25+)	2018 Estimated Elementary (Grade Level 0 to 8)	2.0%	2.4%	2.5%
	2018 Estimated Some High School (Grade Level 9 to 11)	4.2%	5.2%	5.8%
	2018 Estimated High School Graduate	30.0%	30.2%	30.5%
	2018 Estimated Some College	28.2%	24.4%	23.7%
	2018 Estimated Associates Degree Only	9.5%	8.8%	9.1%
	2018 Estimated Bachelors Degree Only	16.3%	18.4%	18.2%
	2018 Estimated Graduate Degree	9.8%	10.5%	10.3%
BUSINESS	2018 Estimated Total Businesses	193	636	1,970
	2018 Estimated Total Employees	2,208	5,545	16,936
	2018 Estimated Employee Population per Business	11.4	8.7	8.6
	2018 Estimated Residential Population per Business	17.2	49.8	37.7

This report was produced using data from private and government sources deemed to be reliable. The information herein is provided without representation or warranty.