

FORMER RESTAURANT

5068 Murfreesboro Road, LaVergne, TN

1,600 SF

FOR LEASE

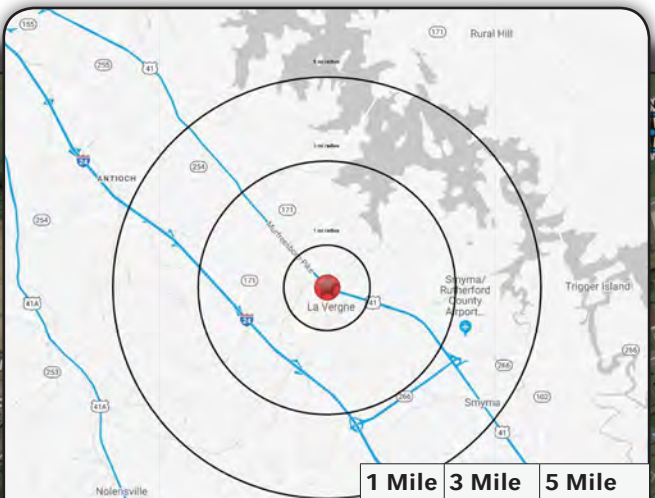
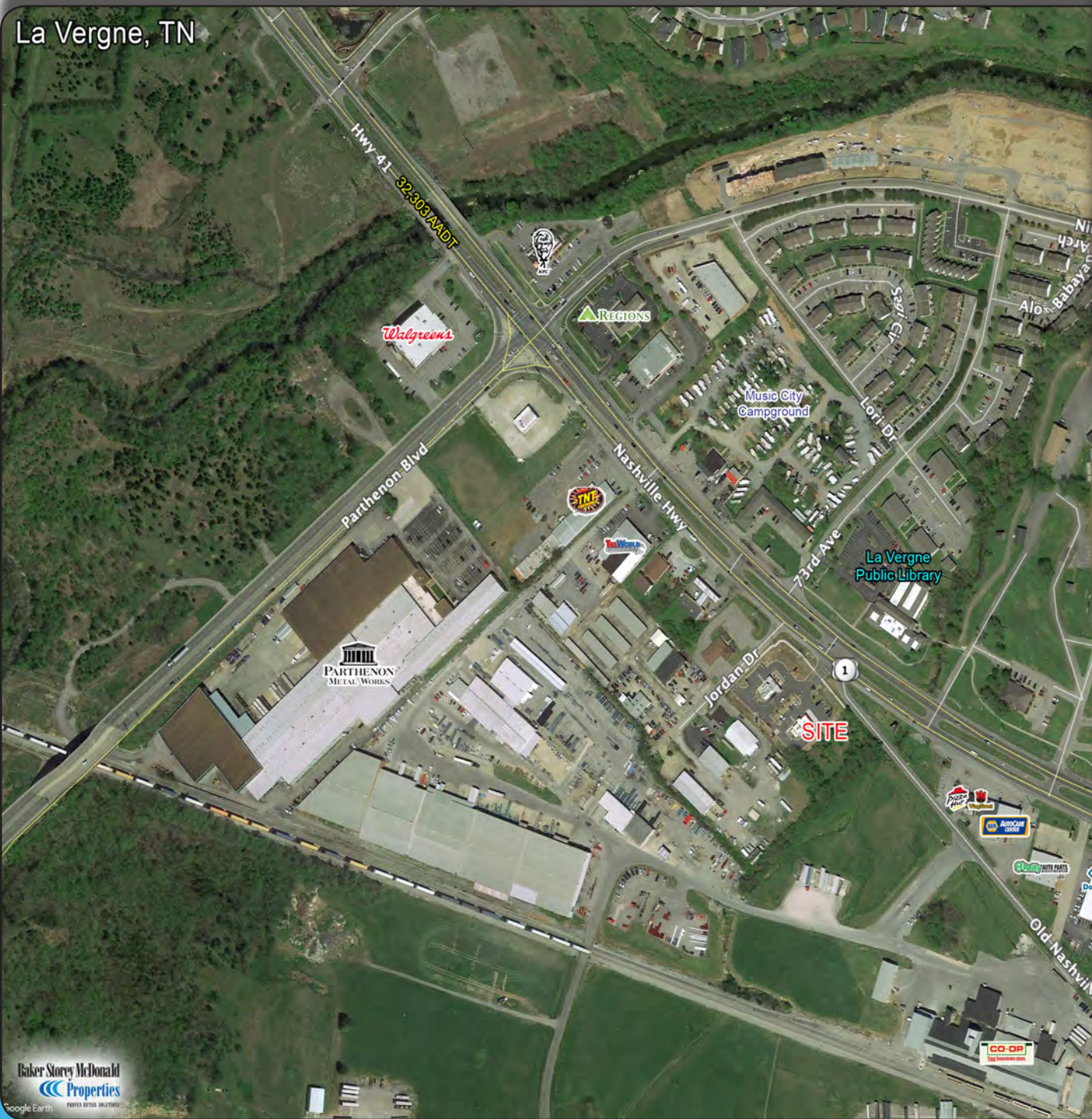
Property Features

- Located on the main thoroughfare that goes towards Nashville (20 minute drive)
- Situated between two large housing subdivisions
- National retailers in the immediate area include: Walgreens, Kroger, Save-A-Lot, Regions Bank, NAPA Auto Parts, Dollar General, O'Reilly Auto Parts, Dollar Tree, Auto Zone, First Tennessee Bank, and CVS



- Murfreesboro Road - 32,303 VPD
- National companies with distribution and/or warehouse centers in the area include: FedEx Freight Distribution Center, Parthenon Metal Works, CinoMax, Bridgestone Firestone Plant, US Cold Storage, and Hennessy Industries Bottling Plant to name a few

La Vergne, TN



	1 Mile	3 Mile	5 Mile
Population	6,356	49,968	118,407
Households	2,327	17,498	45,557
Daytime Demographics	4,292	28,334	58,808

The information contained herein is believed to be accurate but is not warranted as to the accuracy and may change or be updated without notice. Seller or landlord makes no representation as to the environmental condition of the property and recommends purchaser's or tenants independent investigation.

SUMMARY PROFILE

2000-2010 Census, 2018 Estimates with 2023 Projections

Calculated using Weighted Block Centroid from Block Groups

Lat/Lon: 36.0219/-86.5838

RS1

5068 Murfreesboro Rd La Vergne, TN 37086		1 mi radius	3 mi radius	5 mi radius
POPULATION	2018 Estimated Population	6,356	49,968	118,407
	2023 Projected Population	6,824	55,287	127,284
	2010 Census Population	5,673	41,596	100,016
	2000 Census Population	2,977	22,609	63,999
	Projected Annual Growth 2018 to 2023	1.5%	2.1%	1.5%
	Historical Annual Growth 2000 to 2018	6.3%	6.7%	4.7%
	2018 Median Age	33.5	32.2	32.6
HOUSEHOLDS	2018 Estimated Households	2,327	17,498	45,557
	2023 Projected Households	2,514	19,037	49,069
	2010 Census Households	2,093	14,316	37,672
	2000 Census Households	1,083	8,230	25,338
	Projected Annual Growth 2018 to 2023	1.6%	1.8%	1.5%
	Historical Annual Growth 2000 to 2018	6.4%	6.3%	4.4%
RACE AND ETHNICITY	2018 Estimated White	50.5%	55.2%	55.2%
	2018 Estimated Black or African American	34.7%	29.9%	30.5%
	2018 Estimated Asian or Pacific Islander	4.8%	3.9%	4.1%
	2018 Estimated American Indian or Native Alaskan	0.3%	0.3%	0.3%
	2018 Estimated Other Races	9.7%	10.6%	9.9%
	2018 Estimated Hispanic	13.2%	13.8%	12.6%
INCOME	2018 Estimated Average Household Income	\$70,103	\$72,346	\$71,945
	2018 Estimated Median Household Income	\$60,576	\$61,873	\$60,304
	2018 Estimated Per Capita Income	\$25,671	\$25,337	\$27,695
EDUCATION (AGE 25+)	2018 Estimated Elementary (Grade Level 0 to 8)	5.8%	4.8%	4.0%
	2018 Estimated Some High School (Grade Level 9 to 11)	5.4%	6.2%	5.3%
	2018 Estimated High School Graduate	27.7%	31.5%	28.9%
	2018 Estimated Some College	26.2%	22.8%	22.5%
	2018 Estimated Associates Degree Only	10.2%	7.9%	8.6%
	2018 Estimated Bachelors Degree Only	18.5%	19.2%	21.3%
	2018 Estimated Graduate Degree	6.2%	7.5%	9.4%
BUSINESS	2018 Estimated Total Businesses	183	1,056	2,900
	2018 Estimated Total Employees	3,028	18,704	35,749
	2018 Estimated Employee Population per Business	16.6	17.7	12.3
	2018 Estimated Residential Population per Business	34.8	47.3	40.8

This report was produced using data from private and government sources deemed to be reliable. The information herein is provided without representation or warranty.