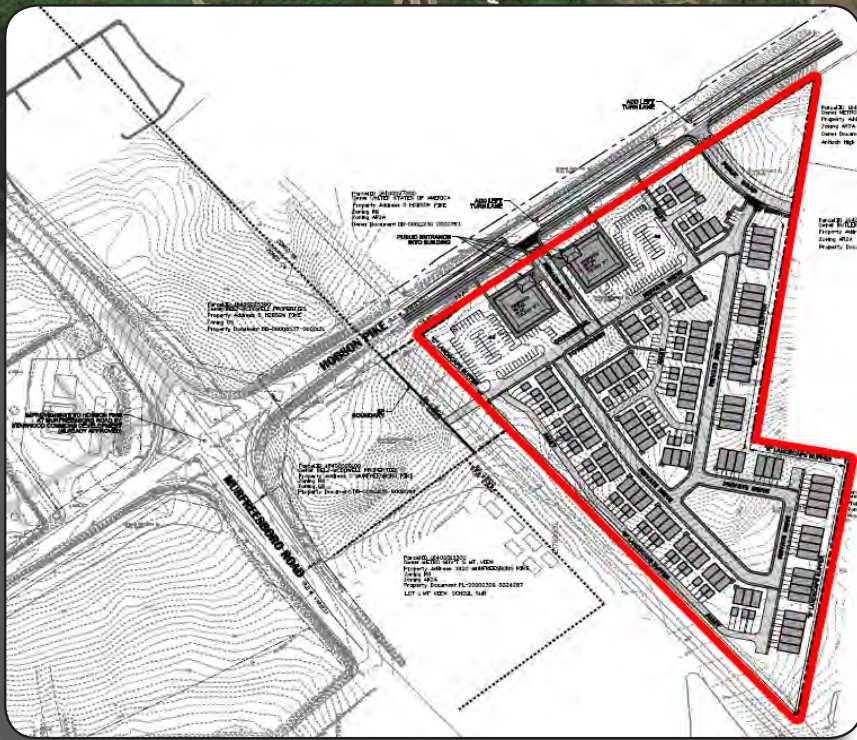
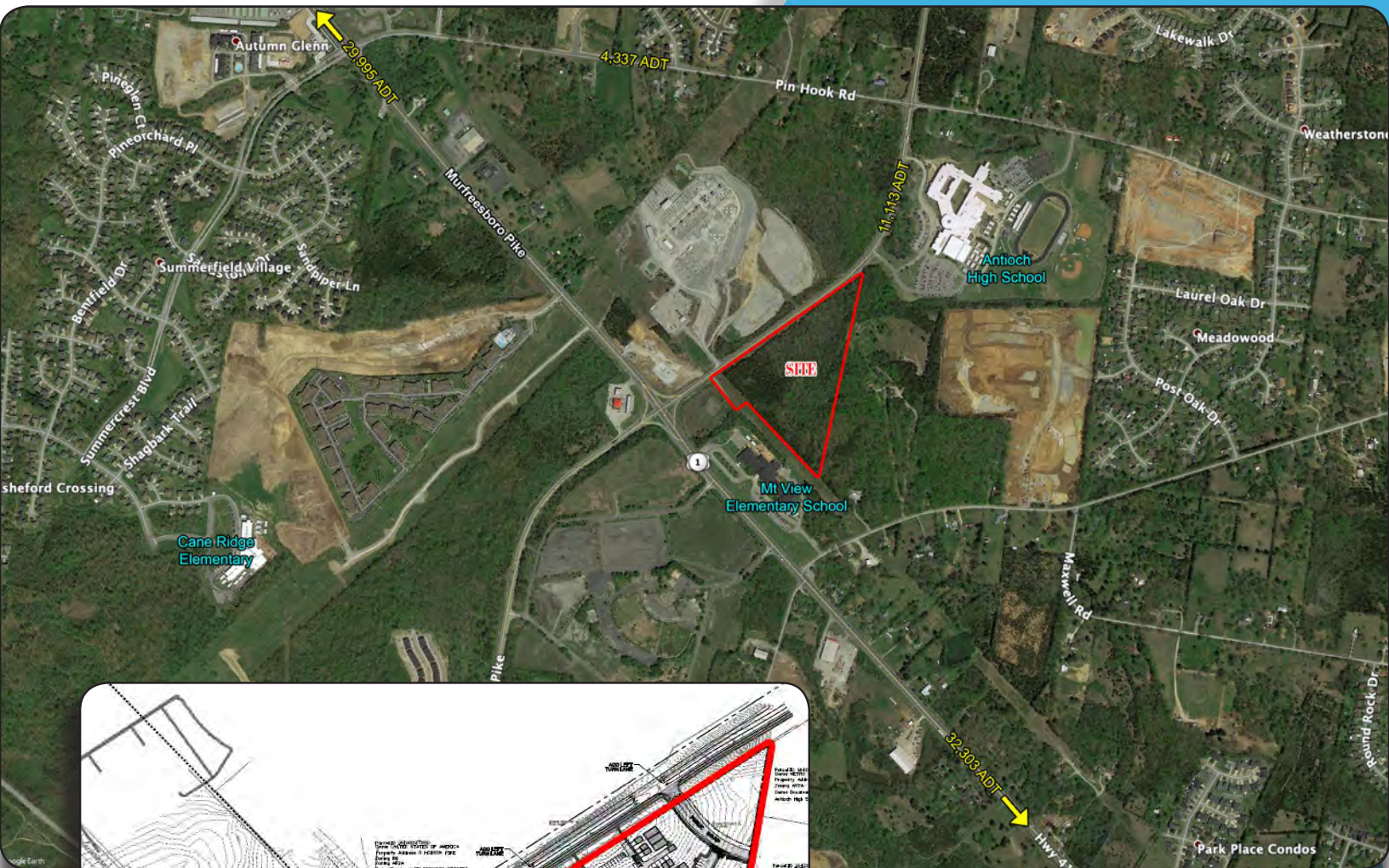


15.77 AC TOWN HOME SITE

Located along Hobson Pike, Antioch, TN

CALL FOR PRICING

FOR SALE



Property Features

- As shown 112 units
- 12.58 Acre Town Home Site
- 2.86 Acre Commercial Site
- SP Zoning

Michael Galpin | 615-373-9511 | mgalpin@bsmproperties.com

3011 Armory Drive, Suite 120, Nashville, TN 37204

SUMMARY PROFILE

2000-2010 Census, 2019 Estimates with 2024 Projections

Calculated using Weighted Block Centroid from Block Groups

Lat/Lon: 36.0462/-86.6052

RS1

1815 Hobson Pike		1 mi radius	3 mi radius	5 mi radius
Nashville, TN 37013				
POPULATION	2019 Estimated Population	8,222	56,234	132,896
	2024 Projected Population	8,140	57,209	138,313
	2010 Census Population	4,599	48,076	117,320
	2000 Census Population	1,077	31,105	82,415
	Projected Annual Growth 2019 to 2024	-0.2%	0.3%	0.8%
	Historical Annual Growth 2000 to 2019	34.9%	4.3%	3.2%
	2019 Median Age	32.7	32.2	32.1
HOUSEHOLDS	2019 Estimated Households	3,178	22,614	52,027
	2024 Projected Households	3,327	23,982	55,593
	2010 Census Households	1,689	18,601	44,290
	2000 Census Households	481	12,729	33,182
	Projected Annual Growth 2019 to 2024	0.9%	1.2%	1.4%
	Historical Annual Growth 2000 to 2019	29.5%	4.1%	3.0%
RACE AND ETHNICITY	2019 Estimated White	49.9%	45.9%	49.9%
	2019 Estimated Black or African American	37.0%	39.6%	33.0%
	2019 Estimated Asian or Pacific Islander	3.6%	4.2%	4.6%
	2019 Estimated American Indian or Native Alaskan	0.3%	0.3%	0.3%
	2019 Estimated Other Races	9.1%	10.0%	12.2%
	2019 Estimated Hispanic	12.7%	13.6%	16.7%
INCOME	2019 Estimated Average Household Income	\$53,879	\$69,814	\$69,520
	2019 Estimated Median Household Income	\$69,141	\$61,068	\$60,054
	2019 Estimated Per Capita Income	\$20,827	\$28,093	\$27,226
EDUCATION (AGE 25+)	2019 Estimated Elementary (Grade Level 0 to 8)	3.5%	4.2%	5.4%
	2019 Estimated Some High School (Grade Level 9 to 11)	4.8%	4.6%	6.0%
	2019 Estimated High School Graduate	21.8%	26.0%	27.7%
	2019 Estimated Some College	21.6%	22.2%	21.1%
	2019 Estimated Associates Degree Only	10.8%	10.1%	8.8%
	2019 Estimated Bachelors Degree Only	27.7%	23.0%	21.9%
	2019 Estimated Graduate Degree	9.9%	9.9%	9.1%
BUSINESS	2019 Estimated Total Businesses	82	1,264	2,398
	2019 Estimated Total Employees	856	17,794	30,388
	2019 Estimated Employee Population per Business	10.4	14.1	12.7
	2019 Estimated Residential Population per Business	99.8	44.5	55.4

This report was produced using data from private and government sources deemed to be reliable. The information herein is provided without representation or warranty.