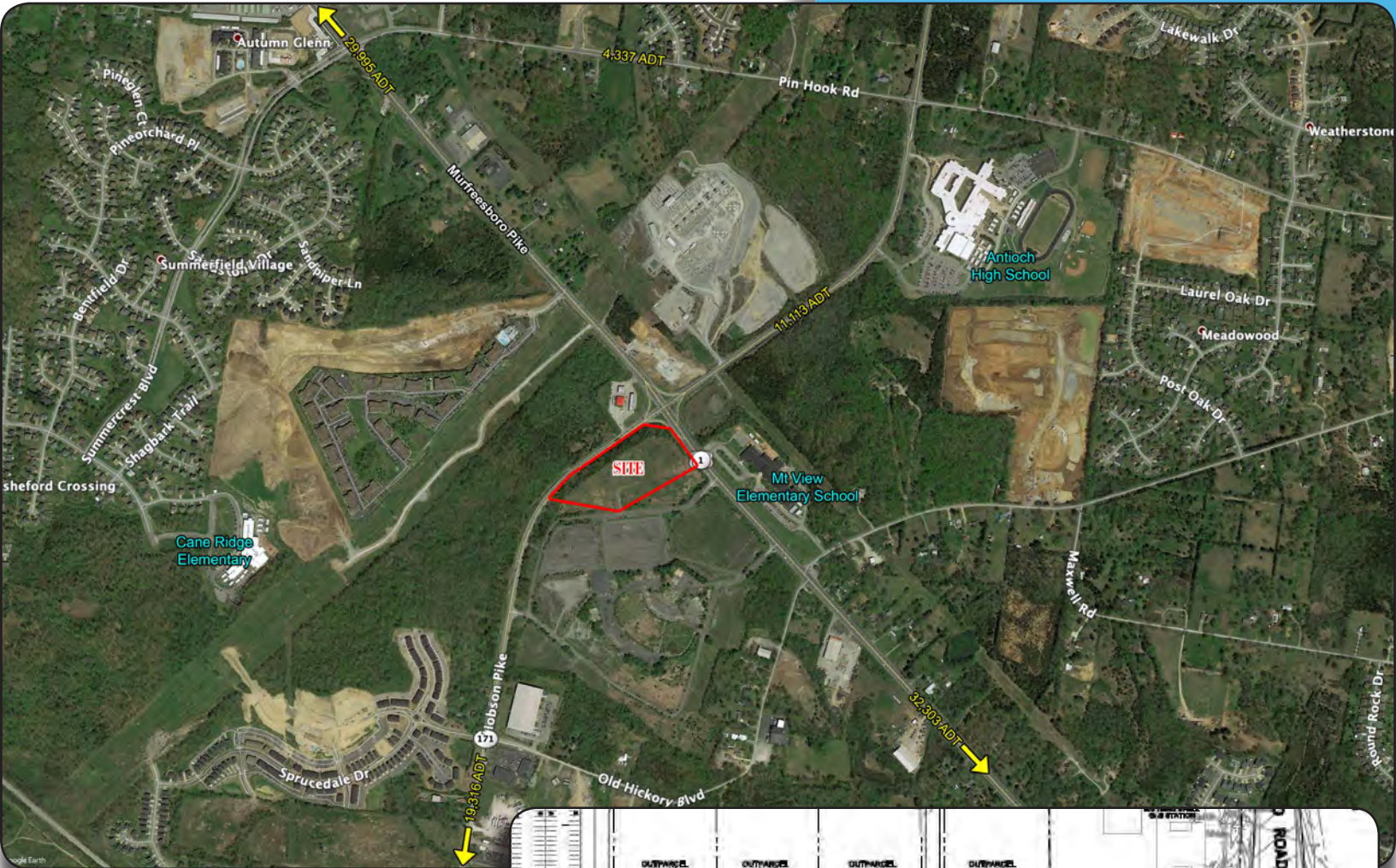


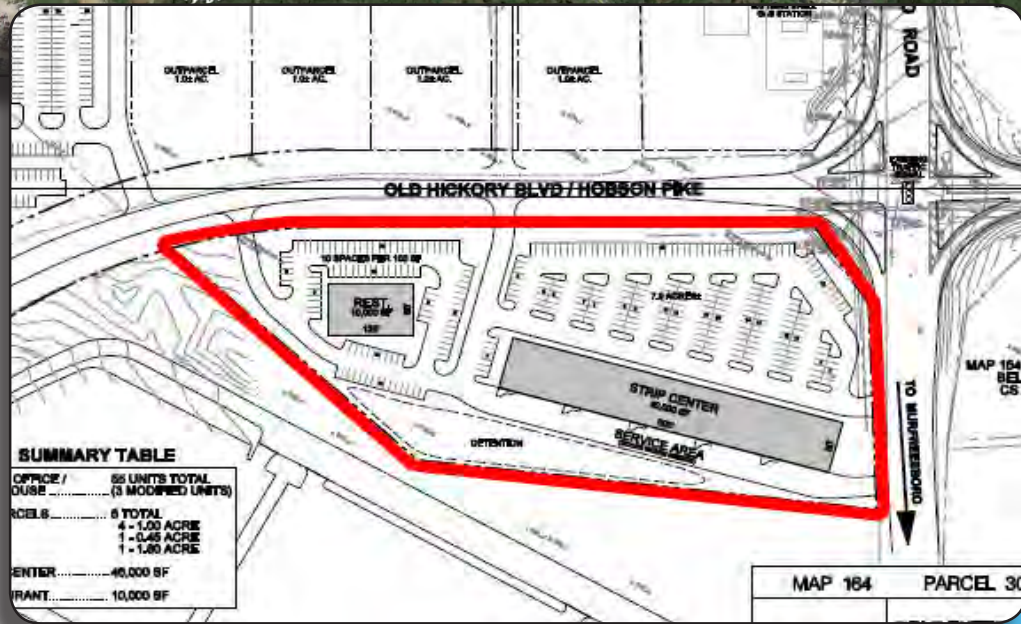
7.93 AC COMMERCIAL SITE

Corner Lot Murfreesboro Road & Hobson Pike, Antioch, TN

FOR SALE



Zoned CS
Call For Pricing



SUMMARY PROFILE

2000-2010 Census, 2019 Estimates with 2024 Projections

Calculated using Weighted Block Centroid from Block Groups

Lat/Lon: 36.0415/-86.6072

RS1

36.041533 -86.607194

		1 mi radius	3 mi radius	5 mi radius
POPULATION	2019 Estimated Population	7,004	51,556	137,695
	2024 Projected Population	6,957	52,370	143,550
	2010 Census Population	3,745	43,258	119,983
	2000 Census Population	844	27,225	83,890
	Projected Annual Growth 2019 to 2024	-0.1%	0.3%	0.9%
	Historical Annual Growth 2000 to 2019	38.4%	4.7%	3.4%
	2019 Median Age	32.5	32.2	32.0
HOUSEHOLDS	2019 Estimated Households	2,763	20,659	54,105
	2024 Projected Households	2,899	21,891	57,851
	2010 Census Households	1,414	16,679	45,394
	2000 Census Households	392	11,181	33,750
	Projected Annual Growth 2019 to 2024	1.0%	1.2%	1.4%
	Historical Annual Growth 2000 to 2019	31.9%	4.5%	3.2%
RACE AND ETHNICITY	2019 Estimated White	48.6%	46.3%	50.6%
	2019 Estimated Black or African American	38.8%	39.3%	32.5%
	2019 Estimated Asian or Pacific Islander	3.9%	4.3%	4.6%
	2019 Estimated American Indian or Native Alaskan	0.3%	0.3%	0.3%
	2019 Estimated Other Races	8.4%	9.8%	12.0%
	2019 Estimated Hispanic	11.4%	13.3%	16.5%
INCOME	2019 Estimated Average Household Income	\$57,433	\$69,890	\$69,672
	2019 Estimated Median Household Income	\$68,899	\$61,746	\$60,490
	2019 Estimated Per Capita Income	\$22,659	\$28,027	\$27,386
EDUCATION (AGE 25+)	2019 Estimated Elementary (Grade Level 0 to 8)	2.8%	4.3%	5.3%
	2019 Estimated Some High School (Grade Level 9 to 11)	4.4%	4.7%	6.0%
	2019 Estimated High School Graduate	20.7%	25.7%	27.6%
	2019 Estimated Some College	21.3%	21.7%	21.0%
	2019 Estimated Associates Degree Only	11.1%	10.0%	8.8%
	2019 Estimated Bachelors Degree Only	28.8%	23.4%	22.1%
	2019 Estimated Graduate Degree	10.9%	10.2%	9.2%
BUSINESS	2019 Estimated Total Businesses	114	1,280	2,618
	2019 Estimated Total Employees	1,621	18,593	32,435
	2019 Estimated Employee Population per Business	14.2	14.5	12.4
	2019 Estimated Residential Population per Business	61.2	40.3	52.6

This report was produced using data from private and government sources deemed to be reliable. The information herein is provided without representation or warranty.