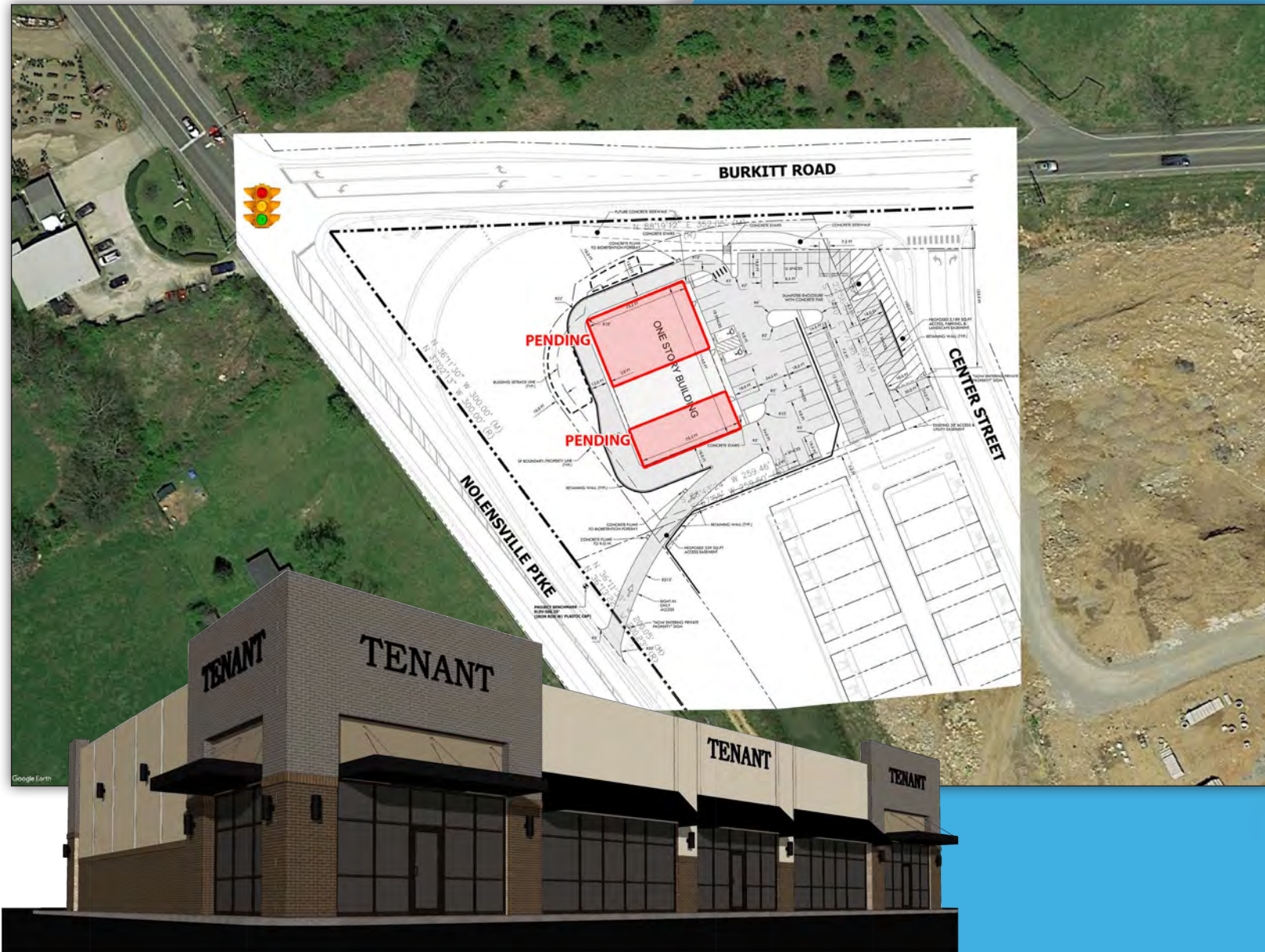


NOLENSVILLE PK AND BURKITT RD RETAIL CENTER

Nashville, TN

±8,600 SF

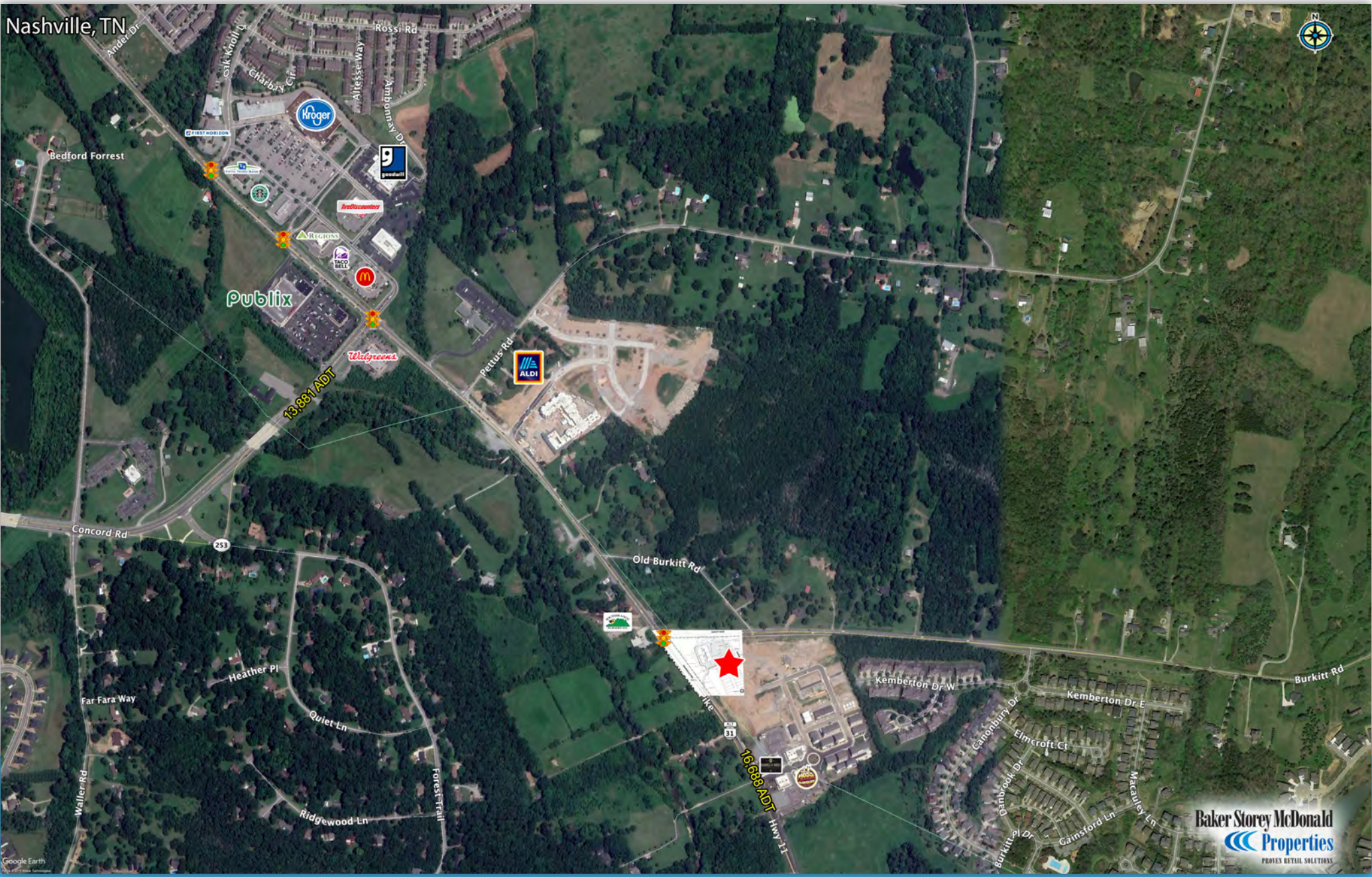
FOR LEASE



Property Features

- 1.51 Acre parcel with 8,600 SF proposed retail shopping center
- 16,688 cars per day on Nolensville Road
- Going to work side of the road with access from Nolensville Road
- Connectivity to I-24 from Burkitt Road
- Adjacent to 200 townhomes, condos and live/work homes

Nashville, TN



Baker Storey McDonald Properties
PROVEN RETAIL SOLUTIONS

The information contained herein is believed to be accurate but is not warranted as to the accuracy and may change or be updated without notice. Seller or landlord makes no representation as to the environmental condition of the property and recommends purchaser's or tenants independent investigation.

SUMMARY PROFILE

2000-2010 Census, 2019 Estimates with 2024 Projections

Calculated using Weighted Block Centroid from Block Groups

Lat/Lon: 35.9912/-86.6836

RS1

TN		1 mi radius	3 mi radius	5 mi radius
POPULATION	2019 Estimated Population	2,380	36,577	111,375
	2024 Projected Population	2,568	39,323	117,929
	2010 Census Population	1,706	28,186	91,153
	2000 Census Population	409	9,601	56,736
	Projected Annual Growth 2019 to 2024	1.6%	1.5%	1.2%
	Historical Annual Growth 2000 to 2019	25.4%	14.8%	5.1%
	2019 Median Age	34.4	34.8	34.0
HOUSEHOLDS	2019 Estimated Households	927	13,792	44,055
	2024 Projected Households	1,008	14,979	47,311
	2010 Census Households	647	10,077	34,935
	2000 Census Households	145	3,556	23,281
	Projected Annual Growth 2019 to 2024	1.7%	1.7%	1.5%
	Historical Annual Growth 2000 to 2019	28.5%	15.1%	4.7%
RACE AND ETHNICITY	2019 Estimated White	74.8%	73.3%	65.9%
	2019 Estimated Black or African American	12.1%	13.4%	17.9%
	2019 Estimated Asian or Pacific Islander	8.0%	8.0%	8.1%
	2019 Estimated American Indian or Native Alaskan	0.1%	0.1%	0.3%
	2019 Estimated Other Races	5.0%	5.1%	7.8%
	2019 Estimated Hispanic	8.5%	7.6%	10.9%
INCOME	2019 Estimated Average Household Income	\$114,337	\$126,038	\$106,204
	2019 Estimated Median Household Income	\$110,586	\$114,453	\$91,562
	2019 Estimated Per Capita Income	\$44,547	\$47,535	\$42,027
EDUCATION (AGE 25+)	2019 Estimated Elementary (Grade Level 0 to 8)	1.2%	1.6%	3.9%
	2019 Estimated Some High School (Grade Level 9 to 11)	1.6%	1.6%	4.1%
	2019 Estimated High School Graduate	14.7%	13.4%	17.6%
	2019 Estimated Some College	14.9%	14.8%	16.5%
	2019 Estimated Associates Degree Only	7.0%	7.1%	6.9%
	2019 Estimated Bachelors Degree Only	37.7%	38.6%	32.4%
	2019 Estimated Graduate Degree	22.9%	22.9%	18.7%
BUSINESS	2019 Estimated Total Businesses	11	580	2,041
	2019 Estimated Total Employees	102	11,473	29,448
	2019 Estimated Employee Population per Business	9.3	19.8	14.4
	2019 Estimated Residential Population per Business	215.8	63.1	54.6

This report was produced using data from private and government sources deemed to be reliable. The information herein is provided without representation or warranty.